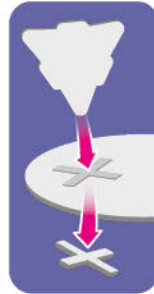


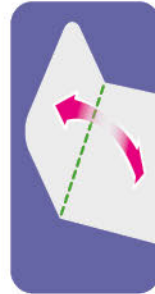
MARBLE MAZE



BuildYourOwnKits.com



Use the Removal Tool to push out the smaller pieces of card.



Pre-crease green dotted lines before each step unless otherwise stated.



If you get stuck, try looking at the next few steps to help you out.

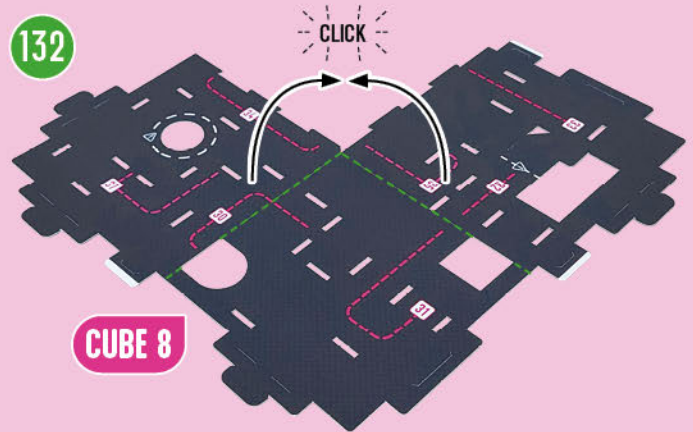


Don't rush! Make yourself a cuppa and take your time while building.

CUBE 8



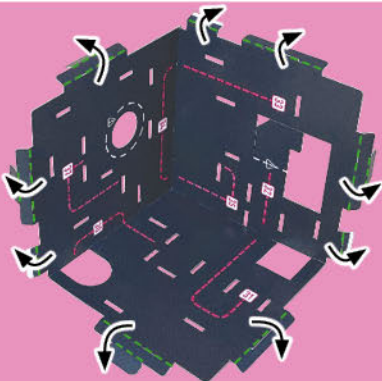
132



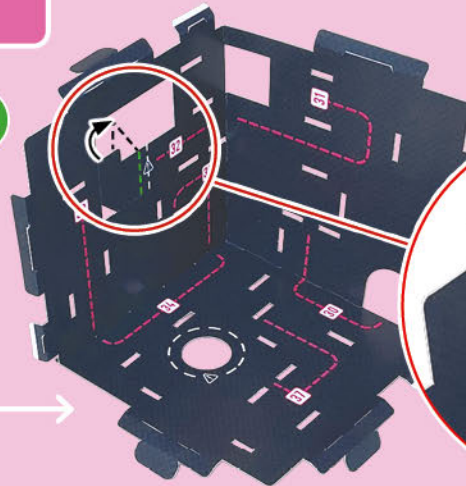
CUBE 8

133

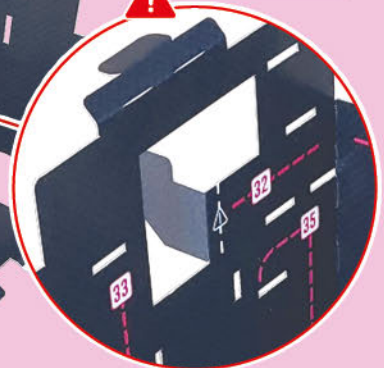
Prefold all creases shown to help with final construction



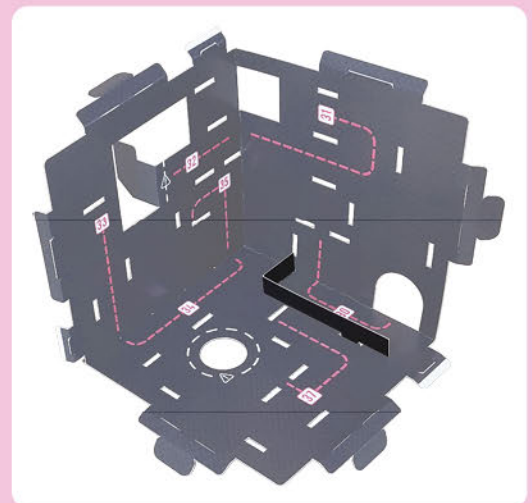
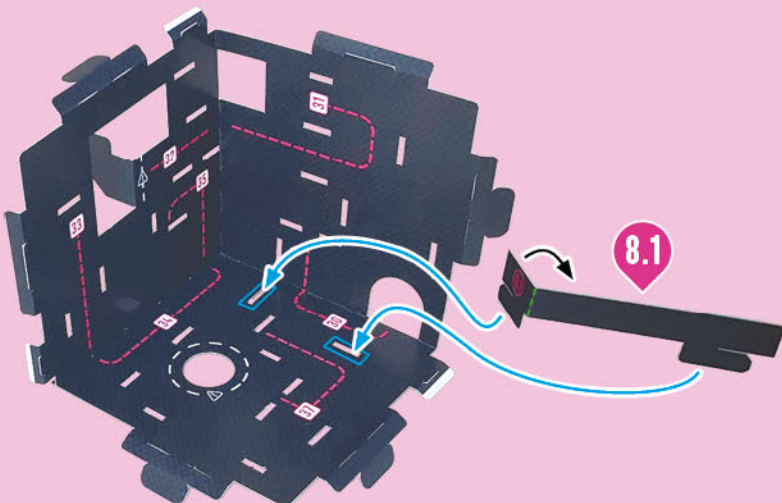
134



Fold back as shown



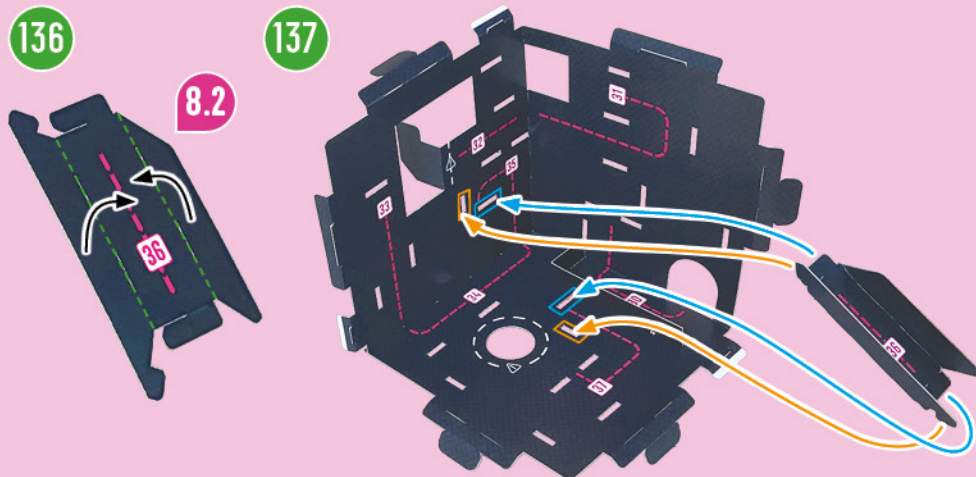
135



136

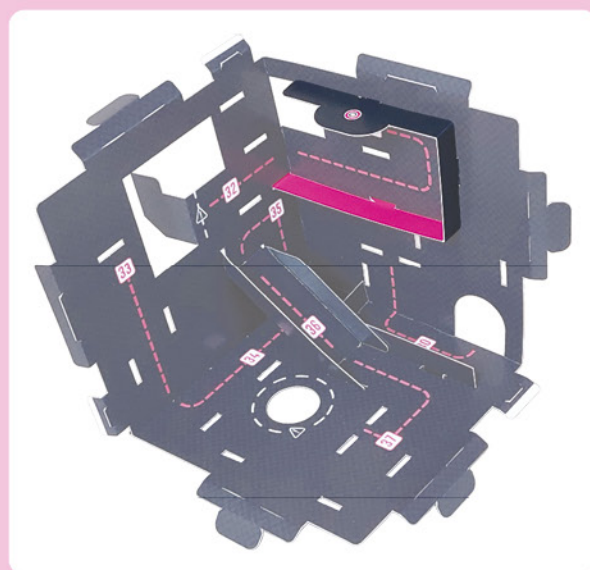
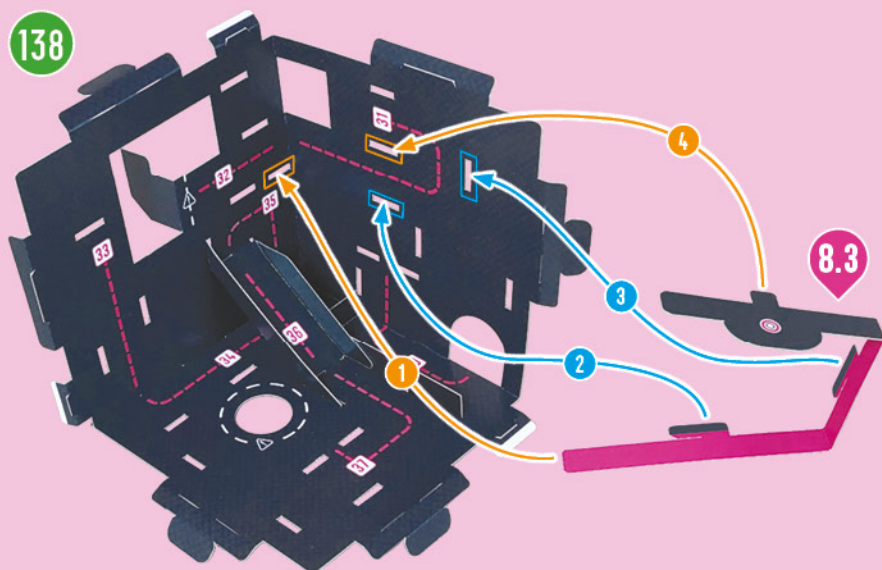
137

8.2



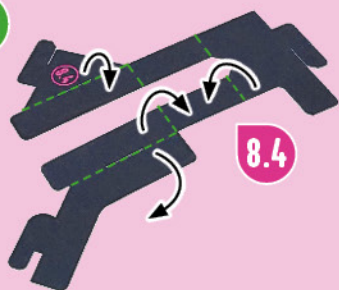
138

8.3



139

8.4

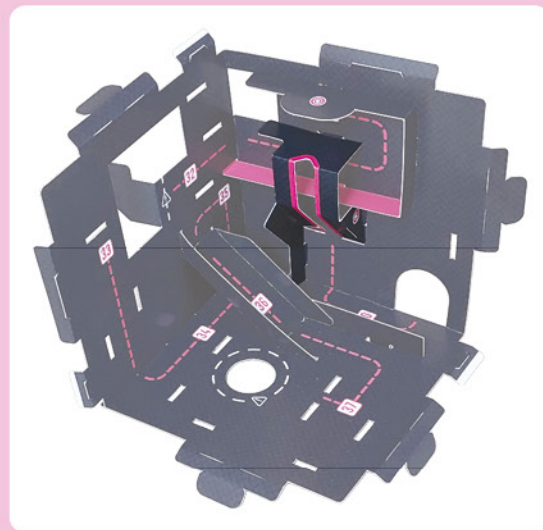
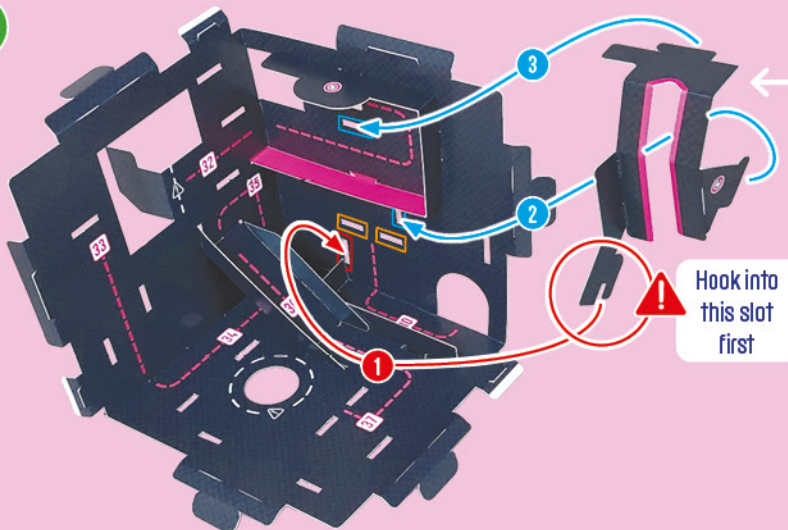


140

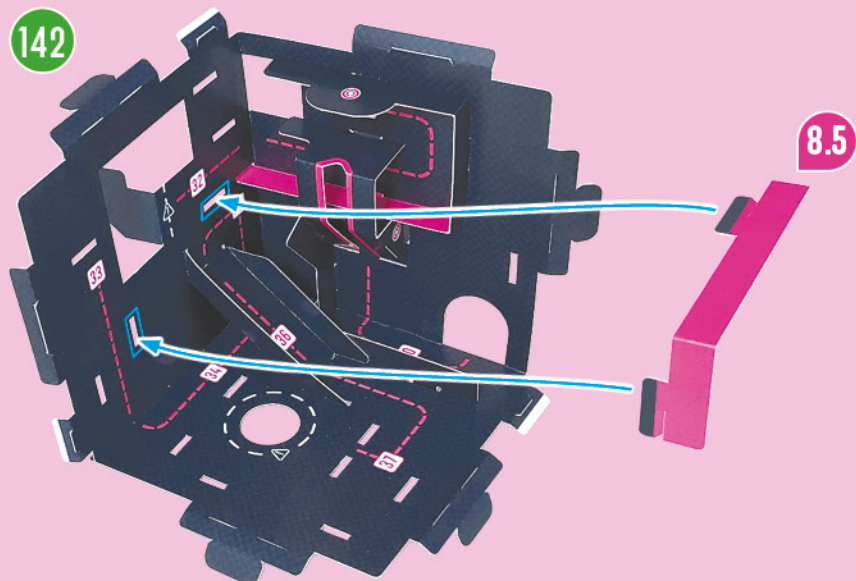


141

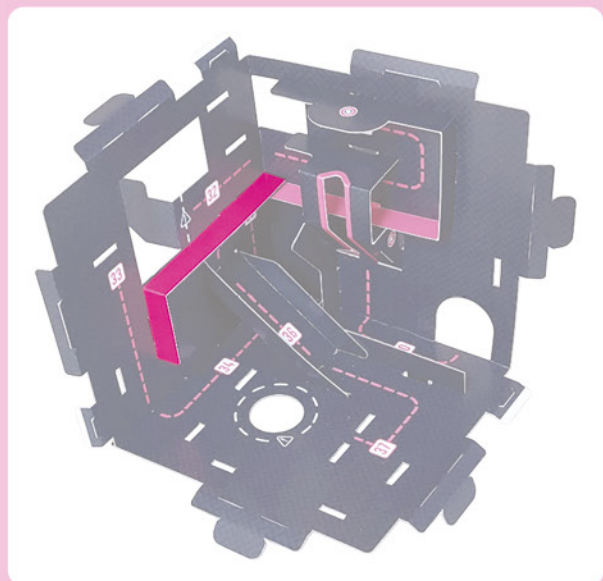
Hook into
this slot
first



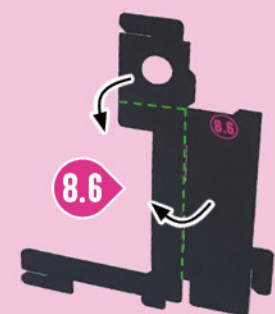
142



8.5



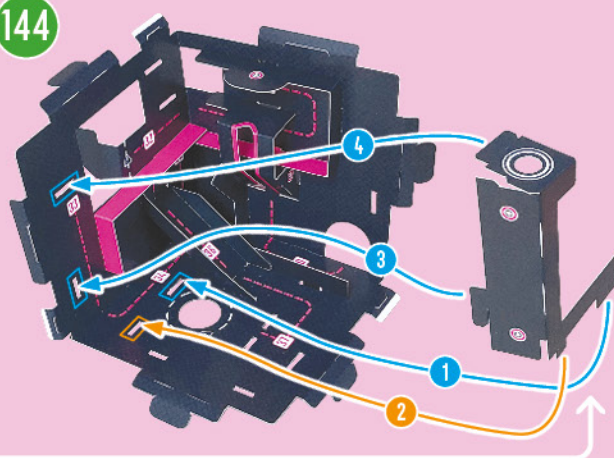
143



8.6



144

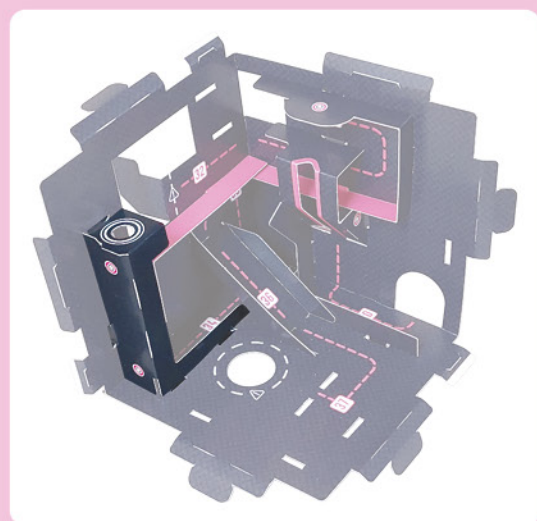


4

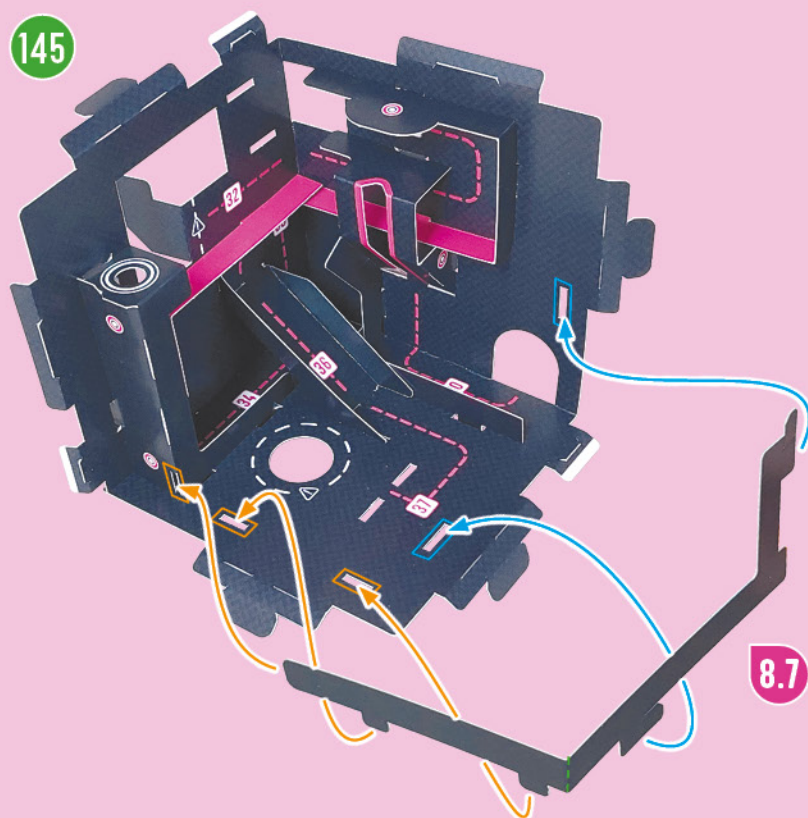
3

1

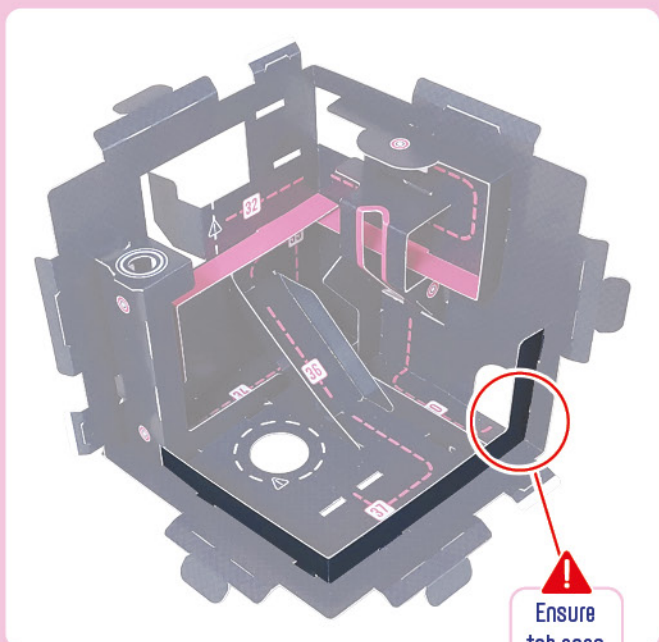
2



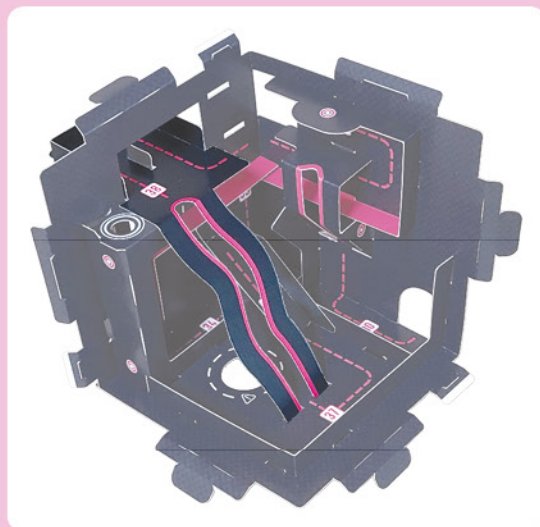
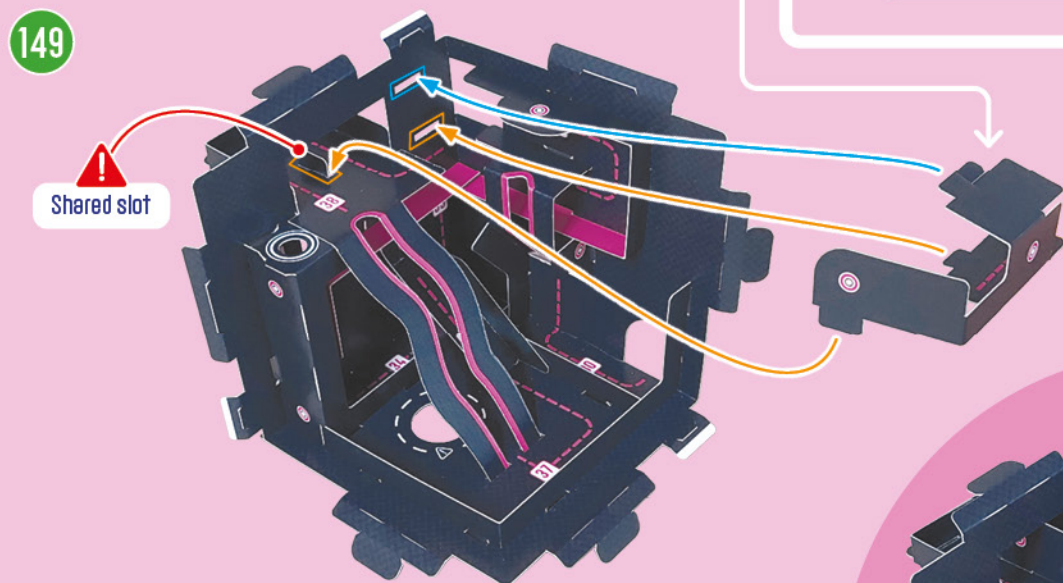
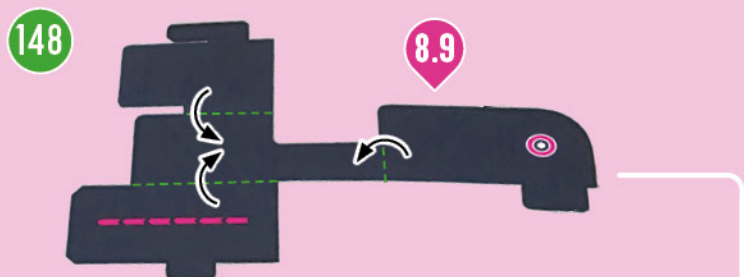
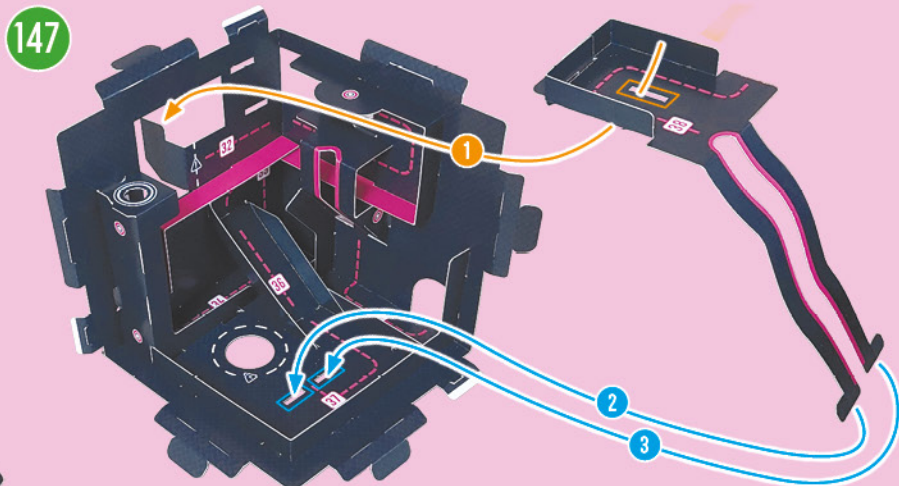
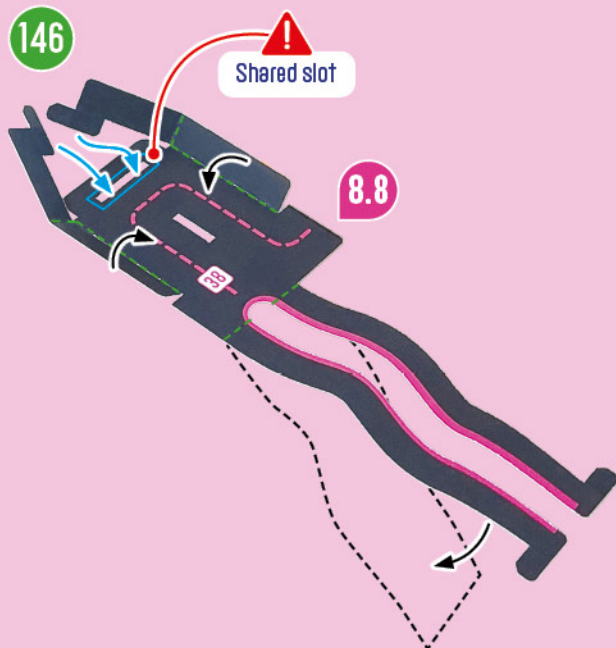
145



8.7



Ensure
tab goes
through
archway



CUBE 8



Put to one side
until Step 151

CONNECTING THE CUBES

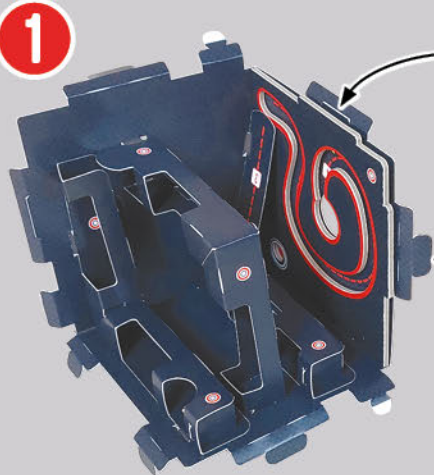
BEFORE YOU START:

Make sure all the pink tabs are folded down at the back of each cube

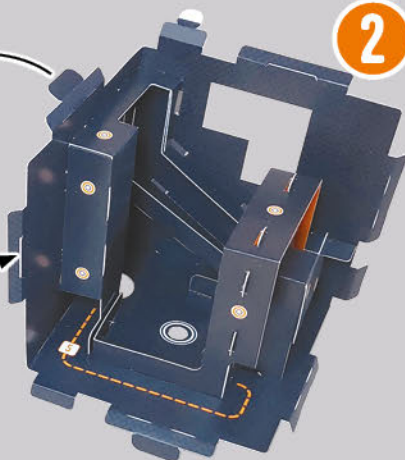
Make sure all tabs on the edges of the cubes are pre-folded

Ensure the cubes are in the correct orientation before attaching them together

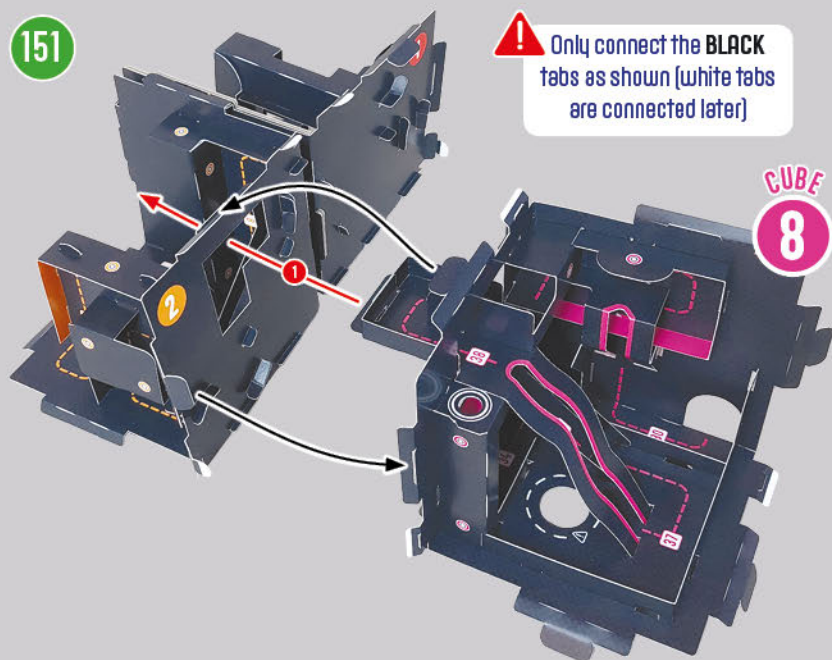
150 CUBE 1



CUBE 2

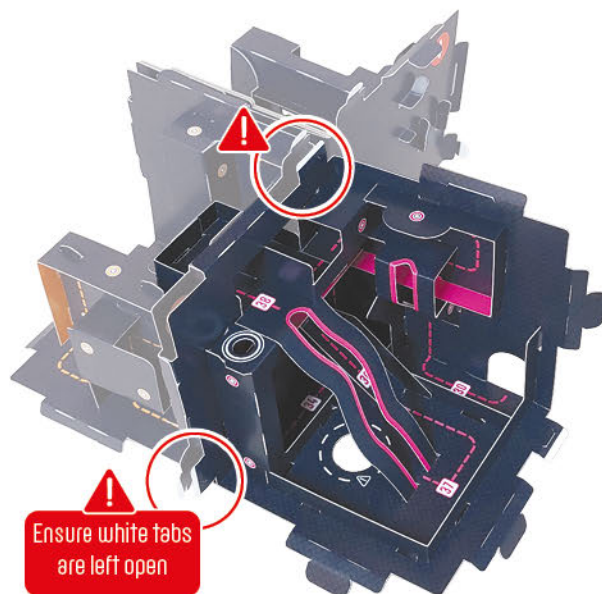


151

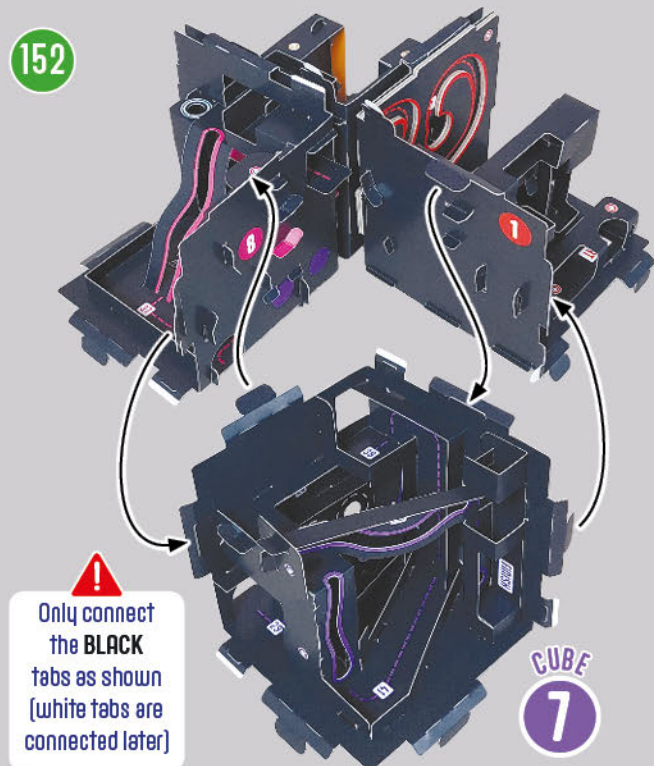


Only connect the **BLACK** tabs as shown (white tabs are connected later)

CUBE 8

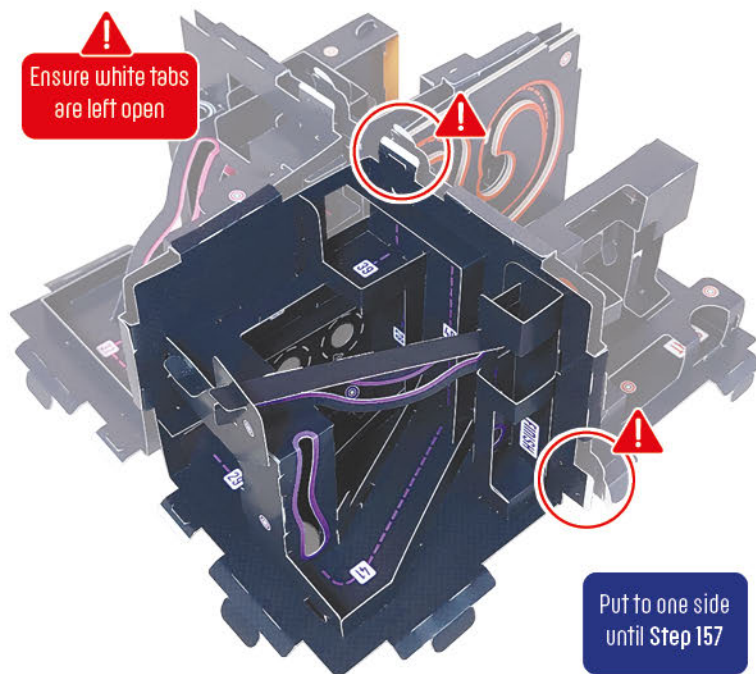


152



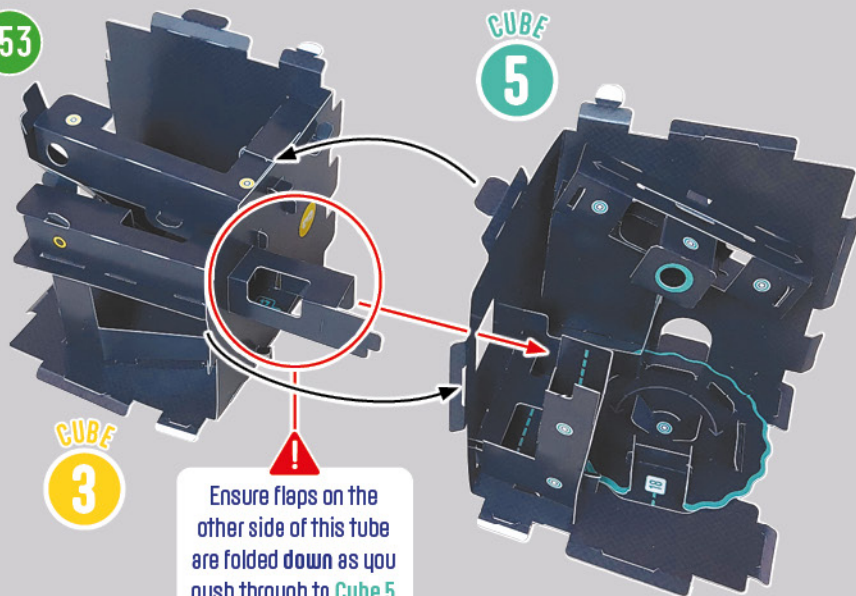
Only connect the **BLACK** tabs as shown (white tabs are connected later)

CUBE 7

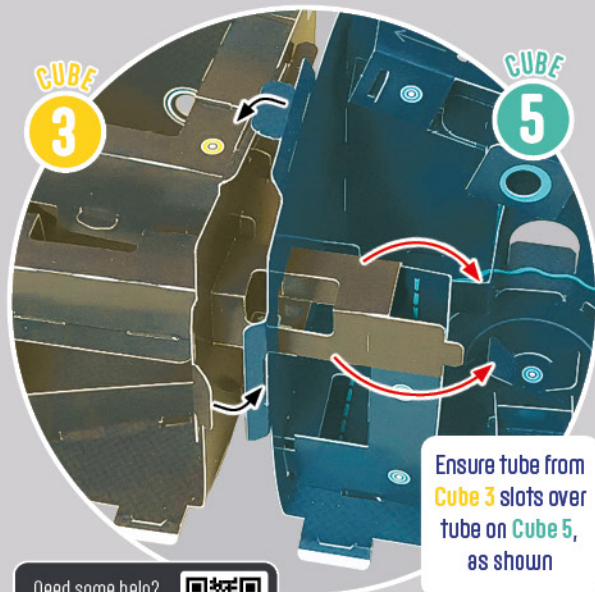


Put to one side until Step 157

153

CUBE
5CUBE
3CUBE
5

Ensure flaps on the other side of this tube are folded down as you push through to Cube 5

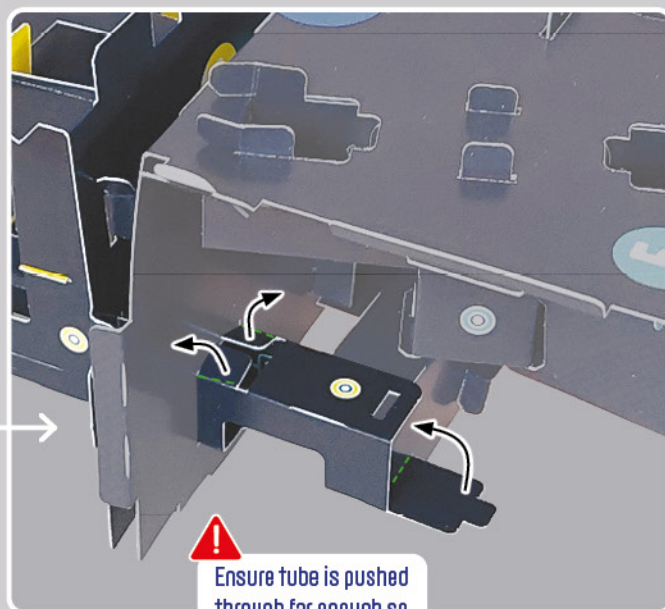
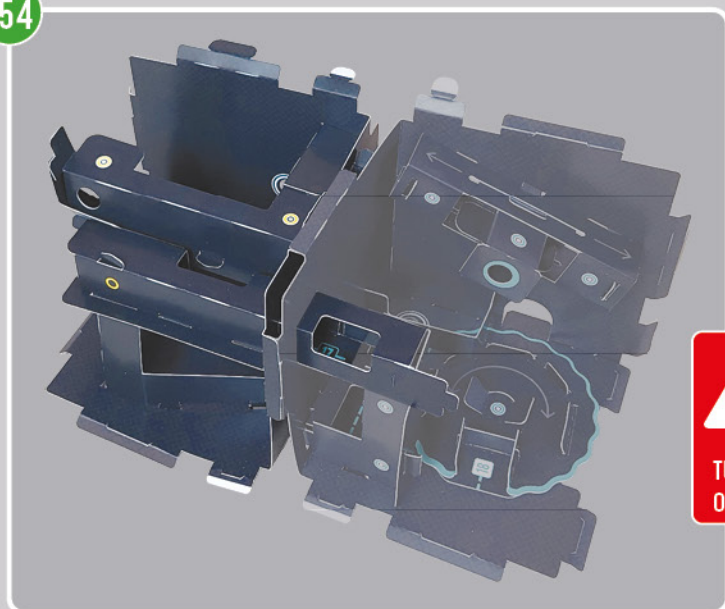


Ensure tube from Cube 3 slots over tube on Cube 5, as shown

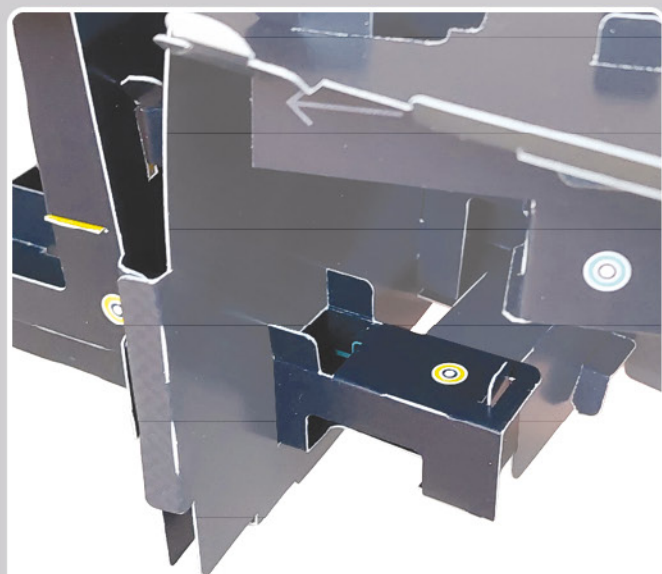
Need some help?
Scan here for video
instructions



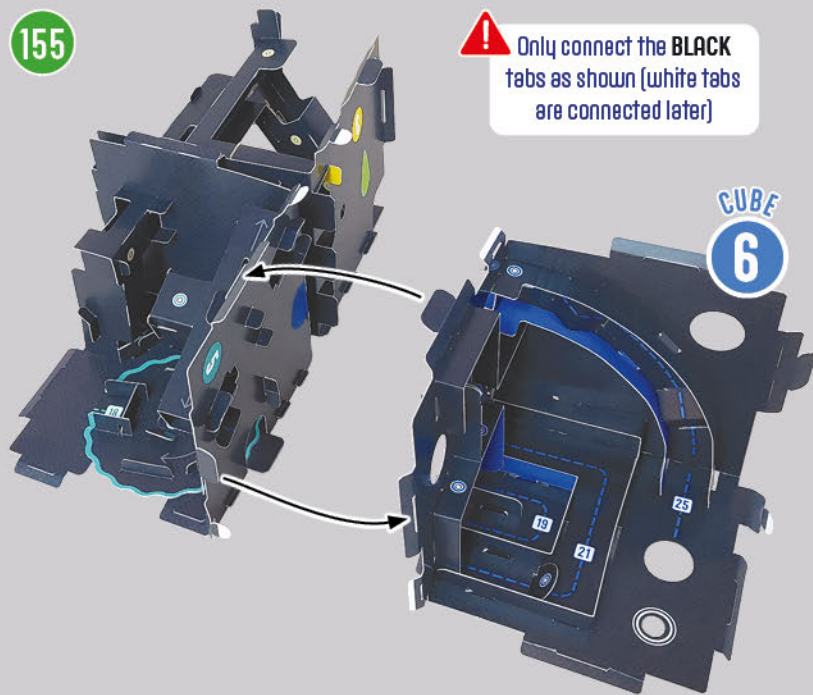
154



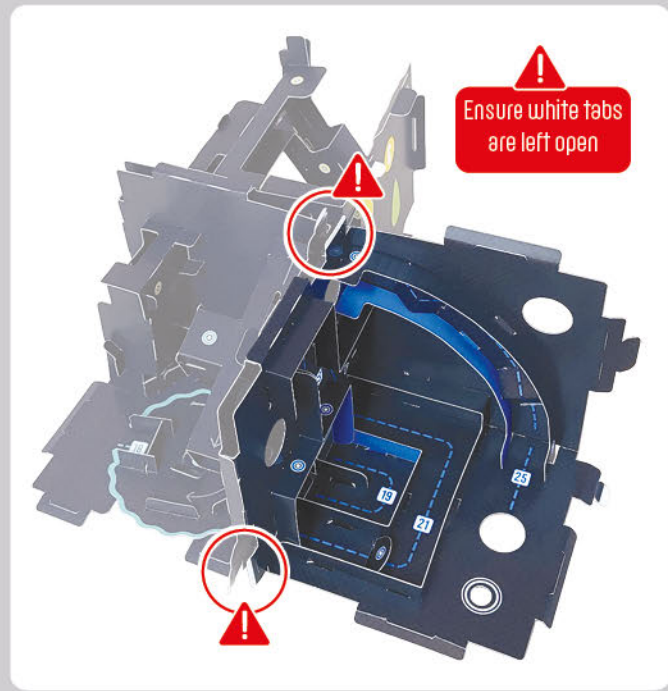
Ensure tube is pushed through far enough so that you can unfold flaps as shown



155

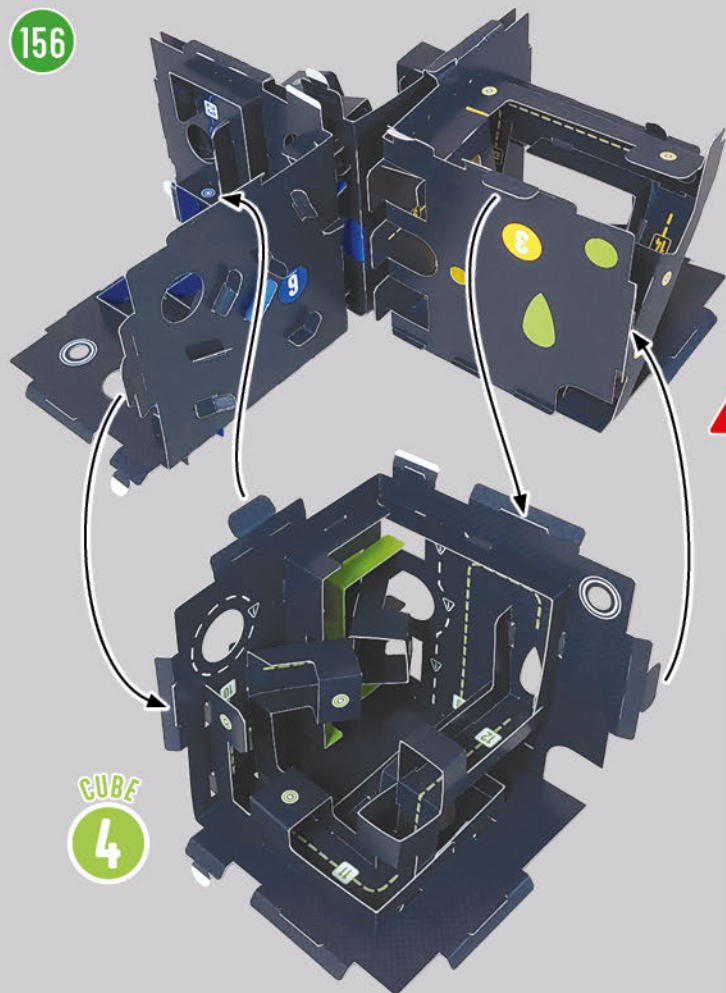


! Only connect the **BLACK** tabs as shown (white tabs are connected later)

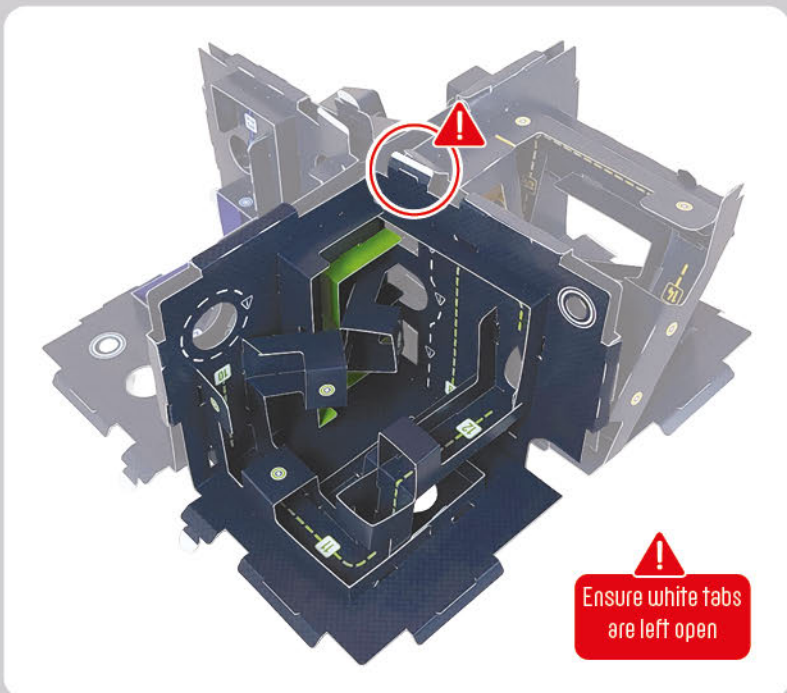


! Ensure white tabs are left open

156



! Only connect the **BLACK** tabs as shown (white tabs are connected later)



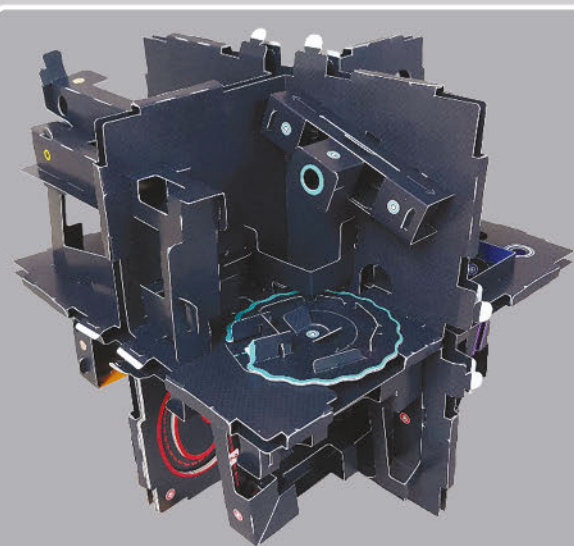
! Ensure white tabs are left open

157

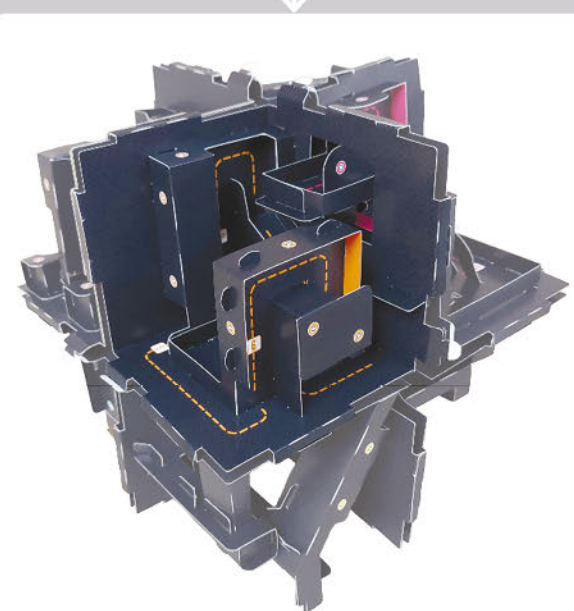
CUBE
3CUBE
4CUBE
6CUBE
5CUBE
8CUBE
2CUBE
7CUBE
1

⚠ Only connect the **BLACK** tabs as shown (white tabs are connected later)

158



ROTATE MAZE to the orientation shown, ready for next steps



FOR THE FOLLOWING STEPS:

There may be one of the symbols below on the step number. This is an action to perform **BEFORE** any other instructions in that step.

Step
no.Step
no.

Turn the maze
90 degrees
towards you

CHECK THE ORIENTATION
matches the picture then
carry out step instructions

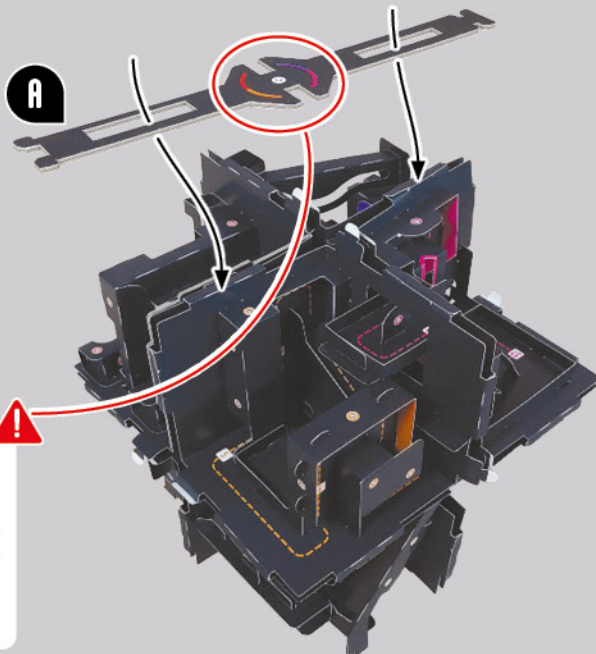


Rotate the maze
90 degrees away
from you

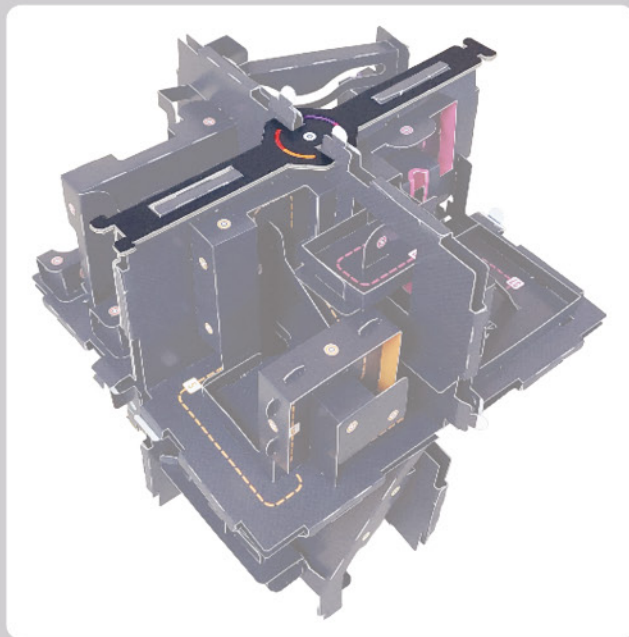
CHECK THE ORIENTATION
matches the picture then
carry out step instructions

159

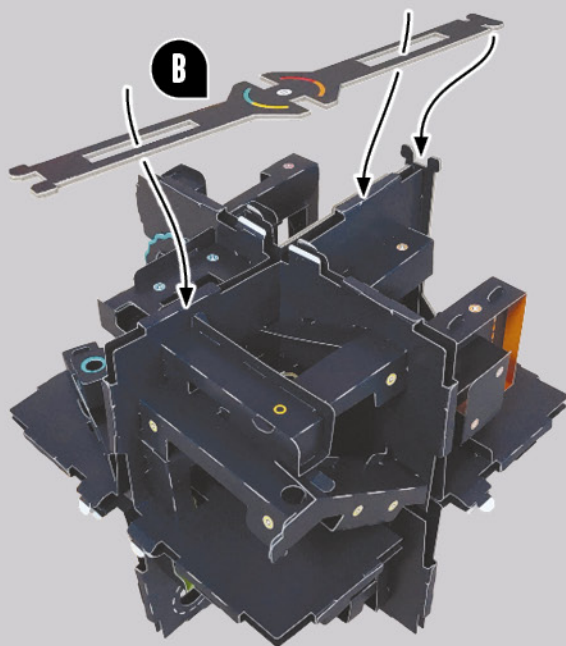
This is the
sheet you will
need for steps
159 - 166



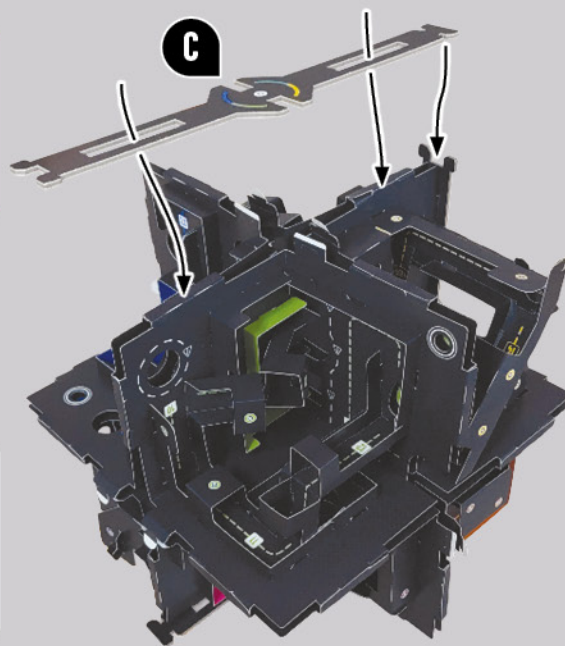
Match the
colours on the
central section
of the frame to
the colours of
the cubes



160

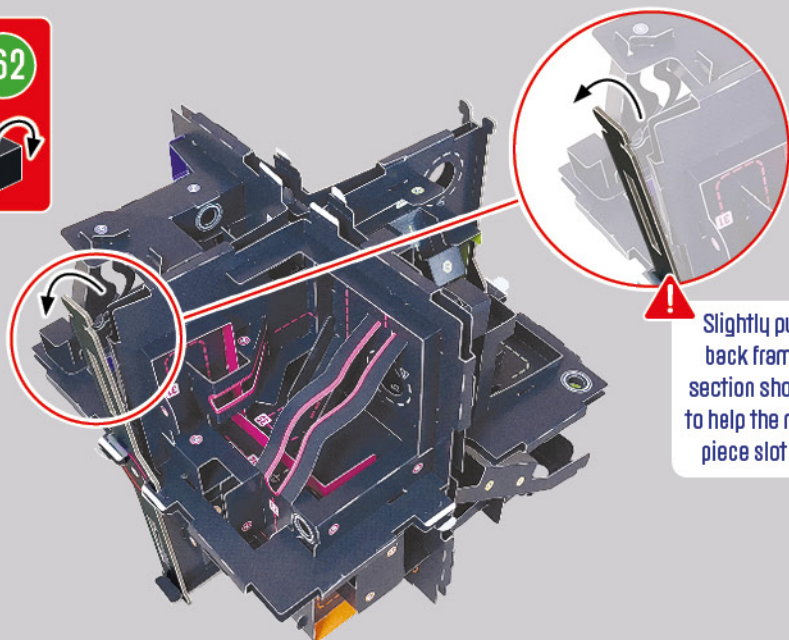


161



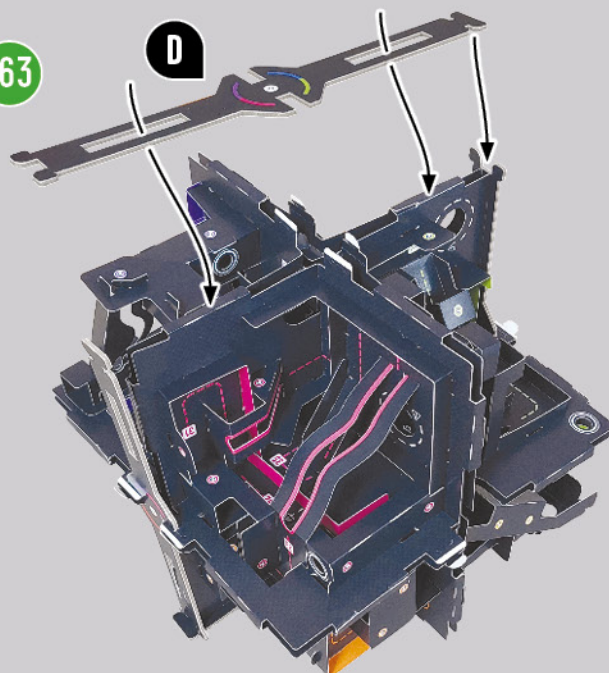
Need some help?
Scan here for video
instructions

162

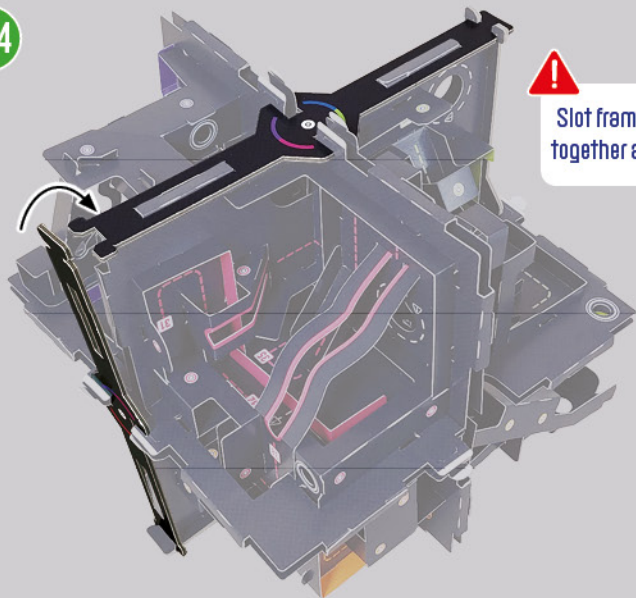


Slightly pull
back frame
section shown
to help the next
piece slot in

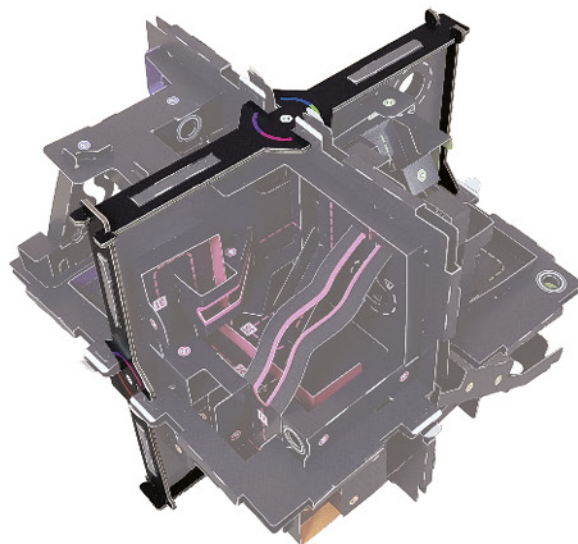
163



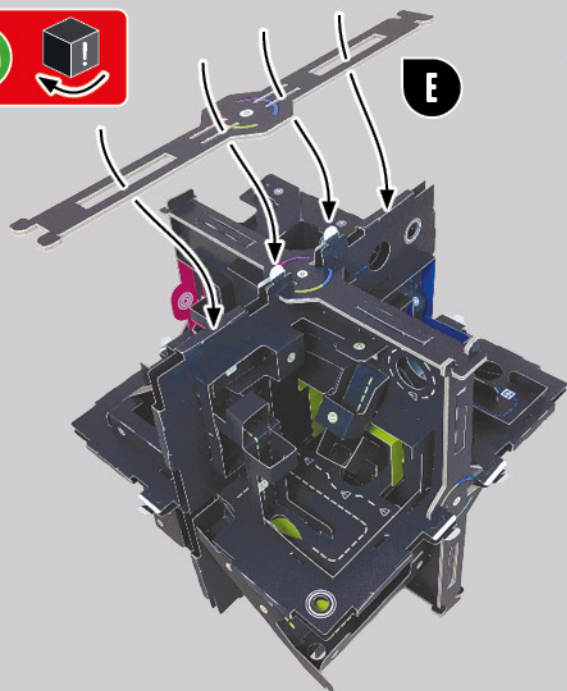
164



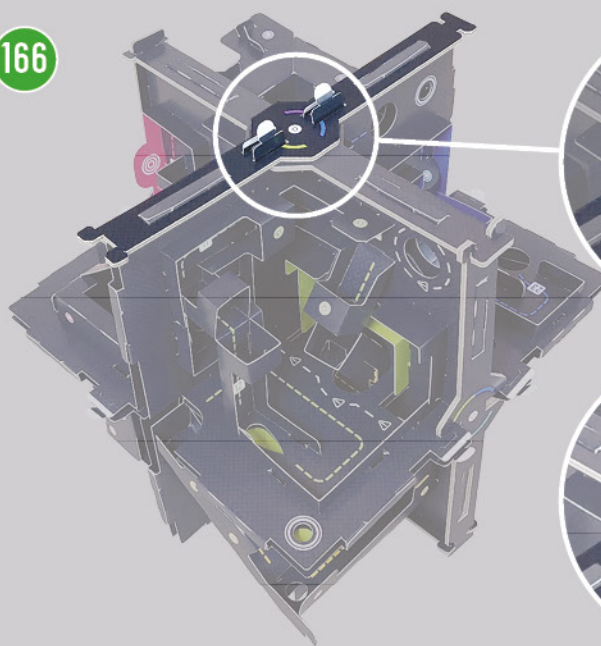
Slot frame pieces
together as shown



165



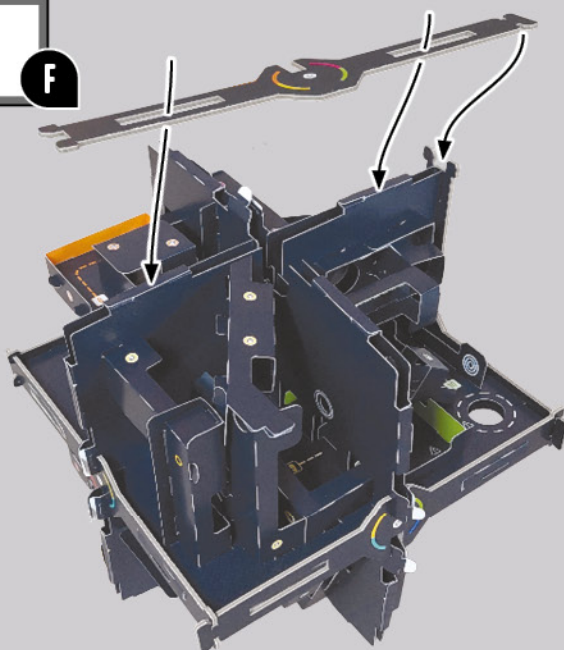
166



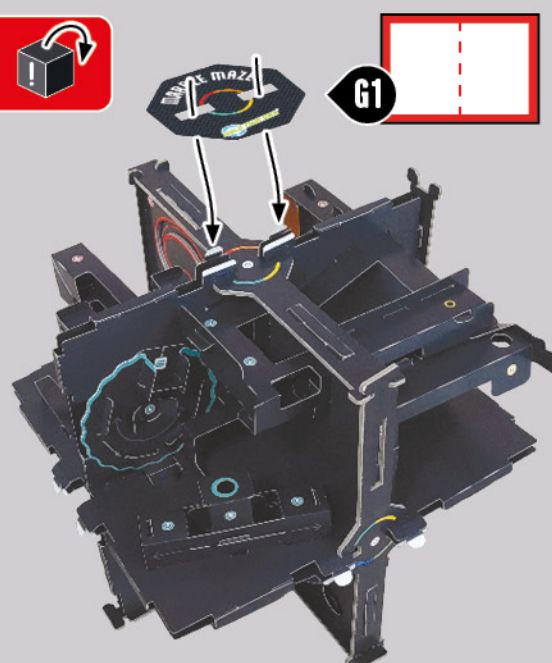
167



These are the
sheets you will
need for steps
167-175



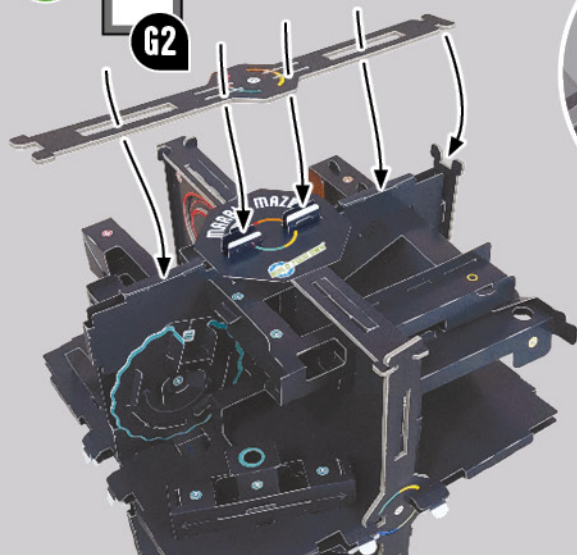
168



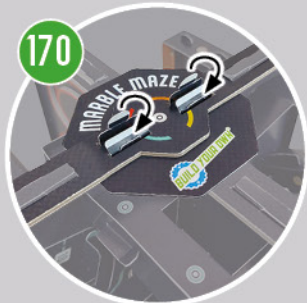
169



G2



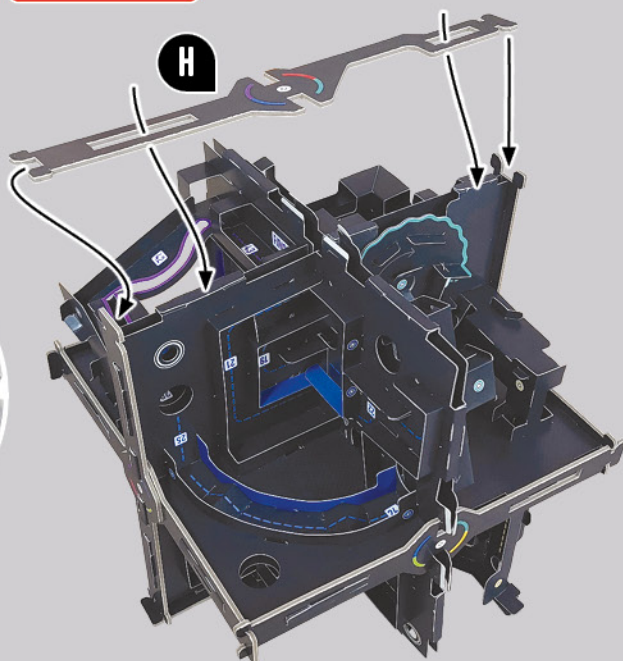
170



171



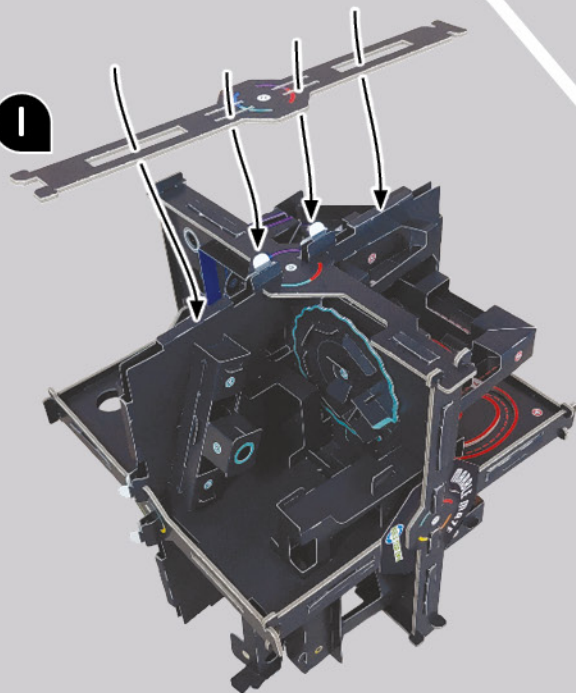
H



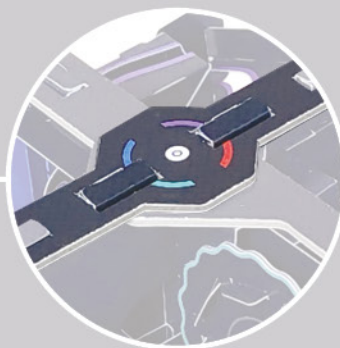
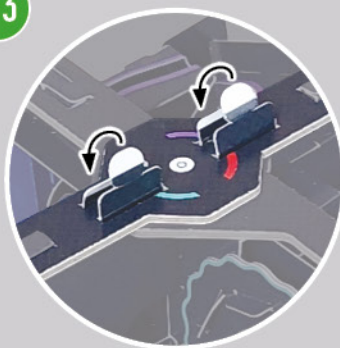
172



I



173



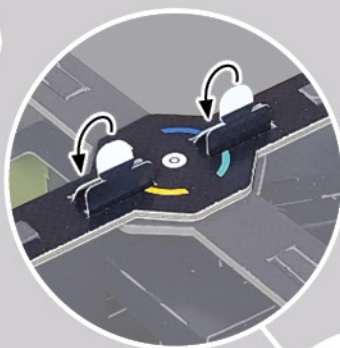
174



J



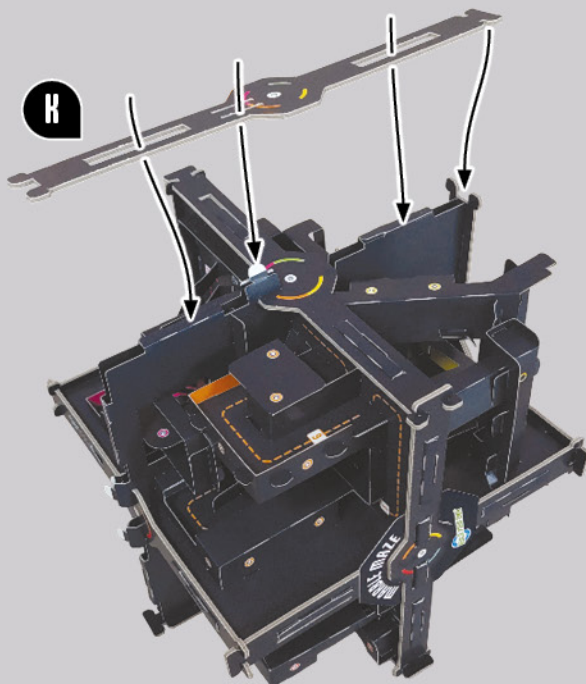
175



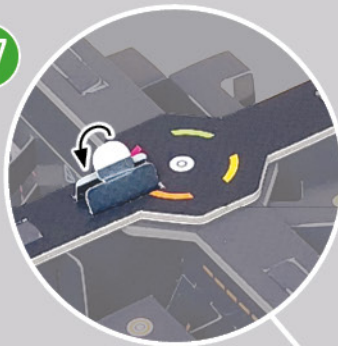
176



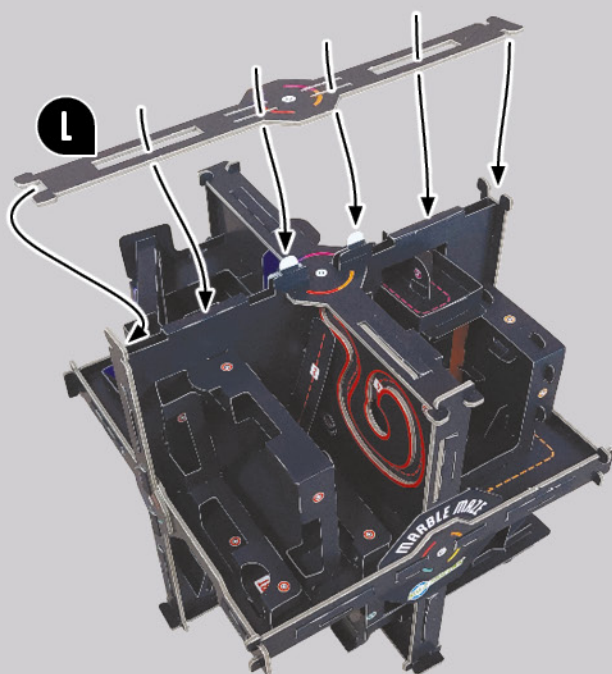
This is the sheet
you will need for
steps 176 - 179



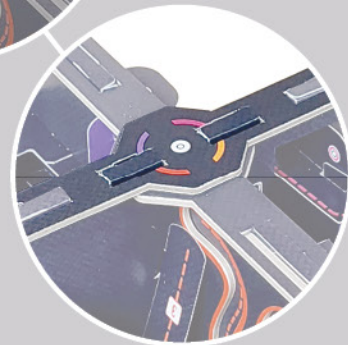
177



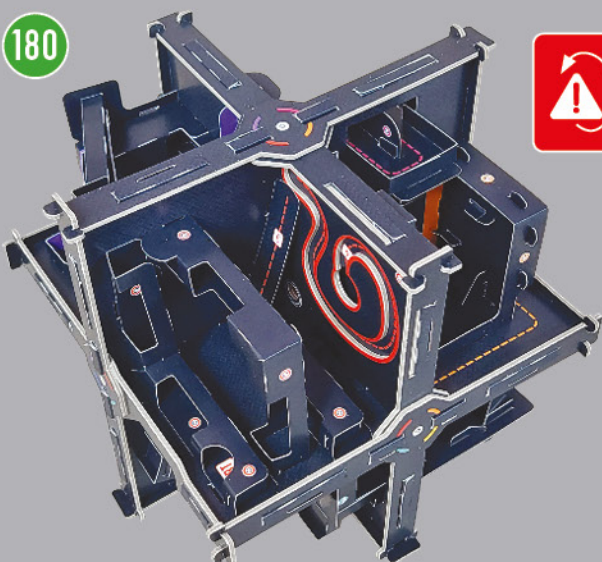
178



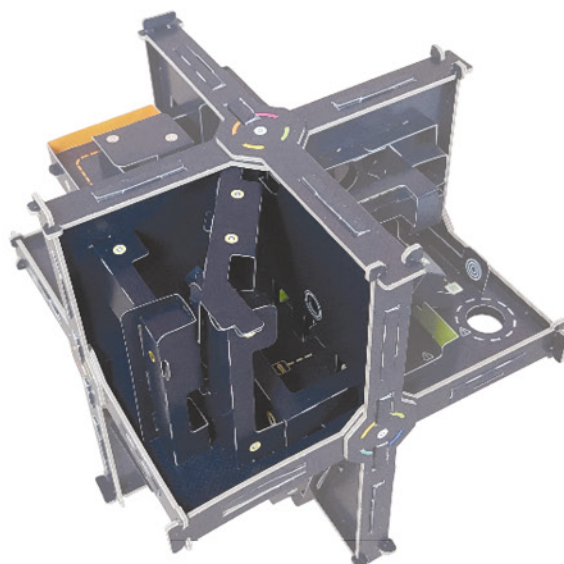
179



180

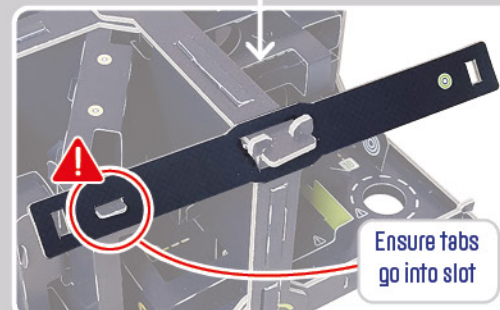
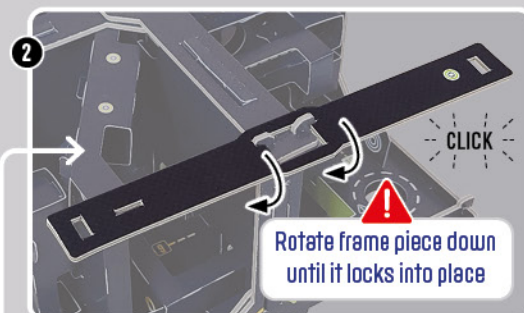
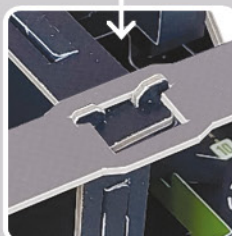
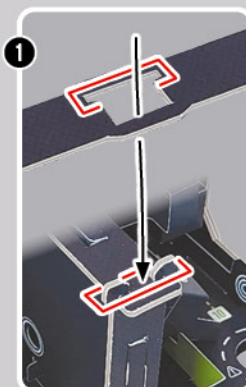
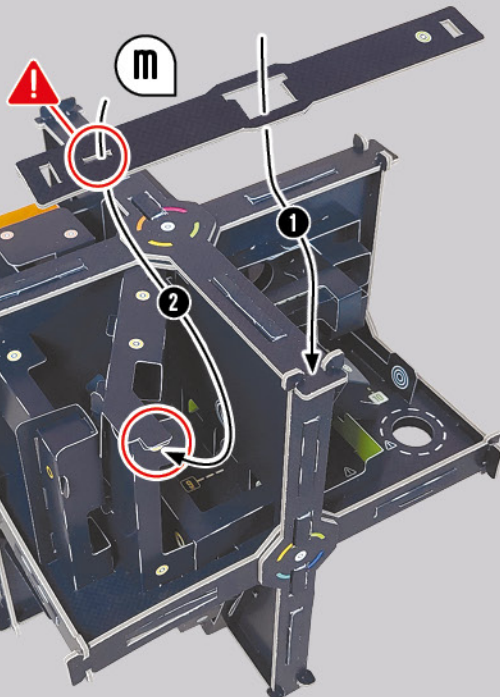
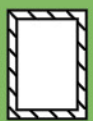


ROTATE MAZE to the
orientation shown,
ready for next steps

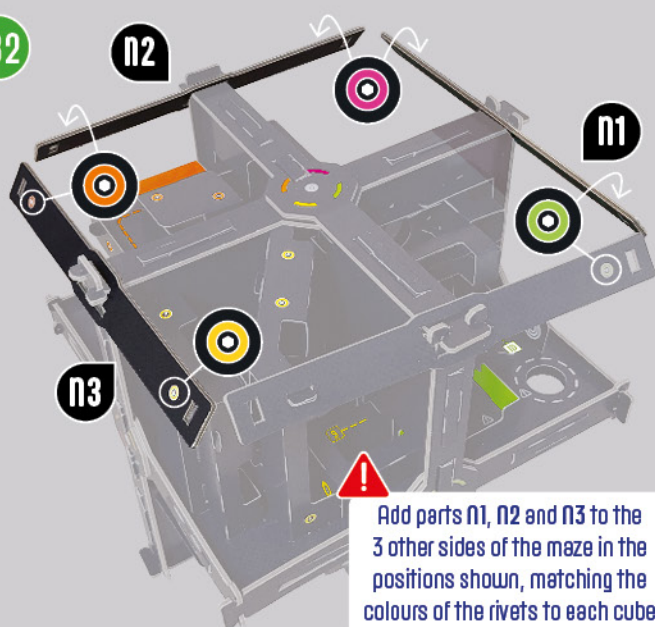


181

This is the sheet you will need for steps 181 - 186

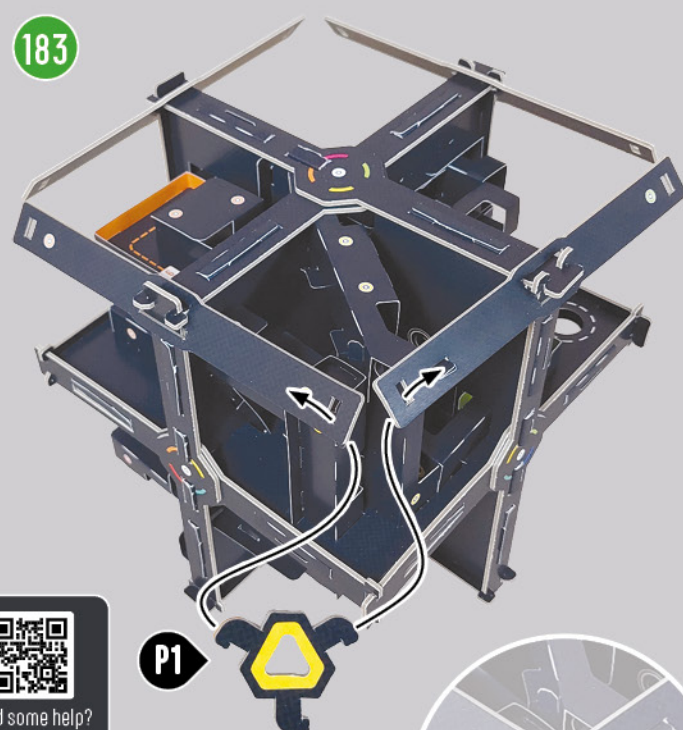


182



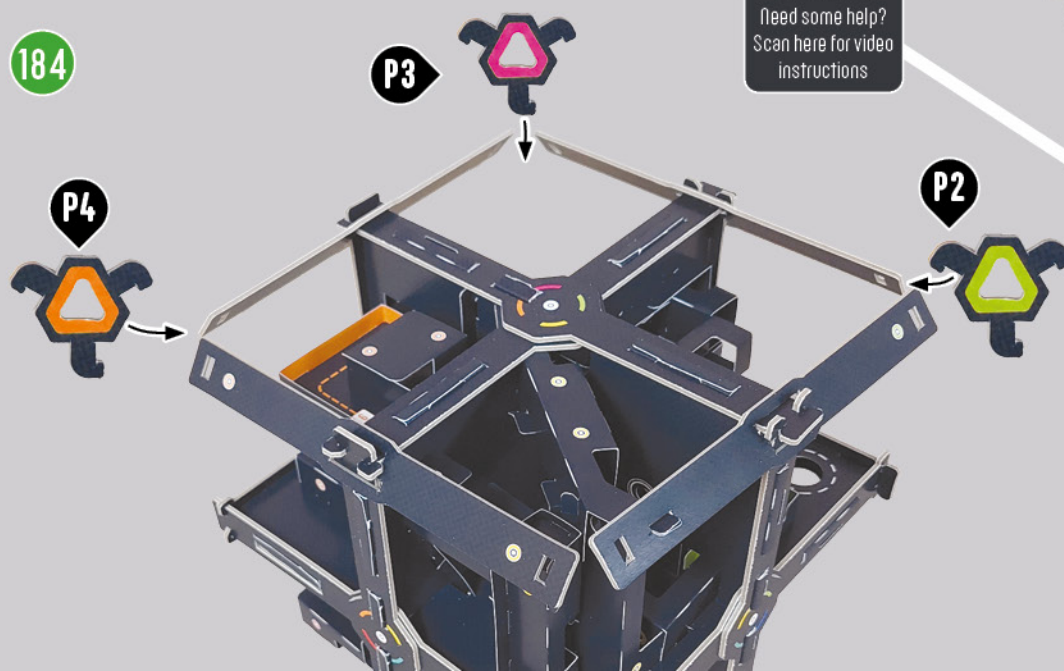
Add parts N1, N2 and N3 to the 3 other sides of the maze in the positions shown, matching the colours of the rivets to each cube

183



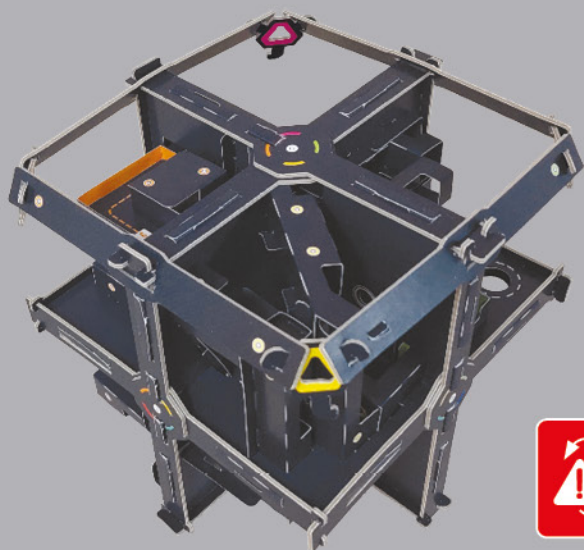
Need some help?
Scan here for video
instructions

184

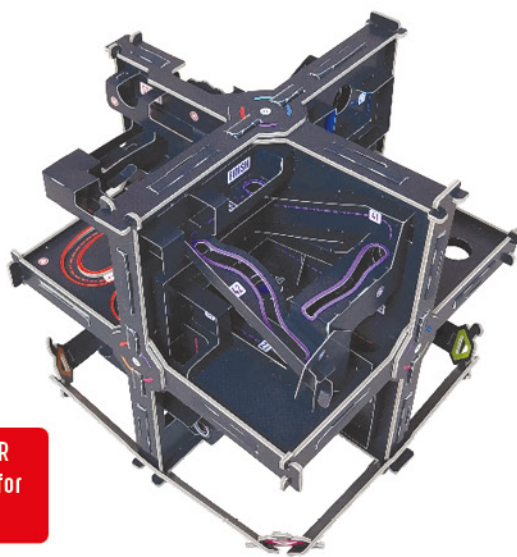


Add P2, P3 and P4 to the other 3 top corners of the maze as shown, matching them to the colours of each cube

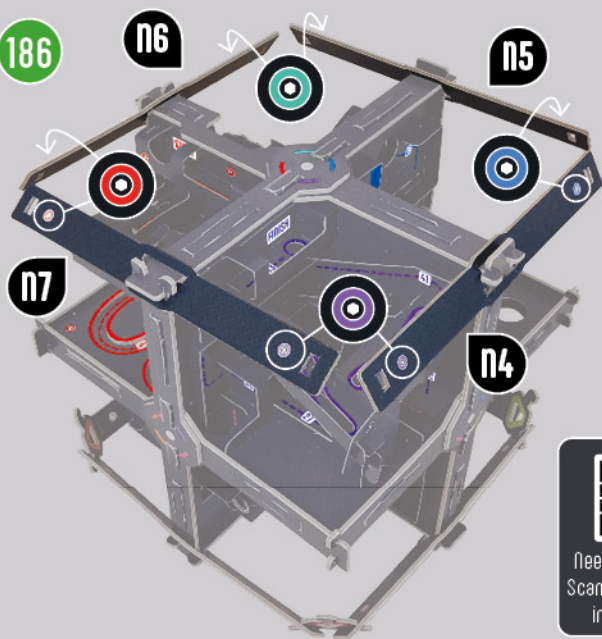
185



TURN MAZE OVER
as shown, ready for
next steps



186

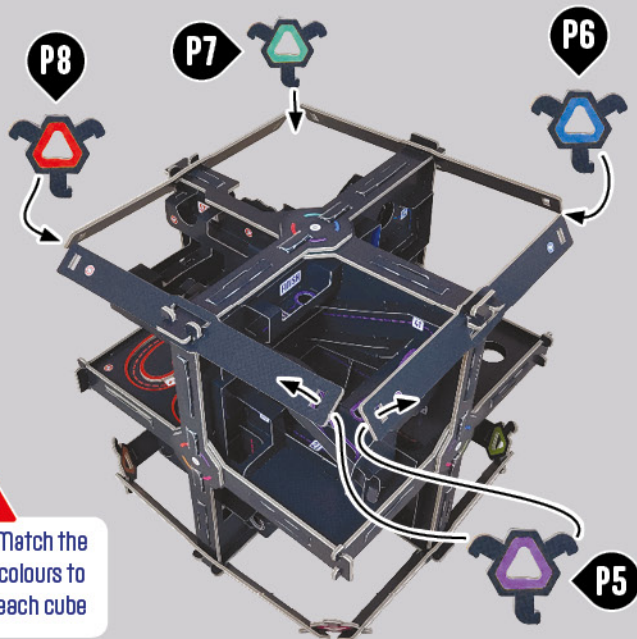


187

This is the
sheet you will
need for steps
187-188

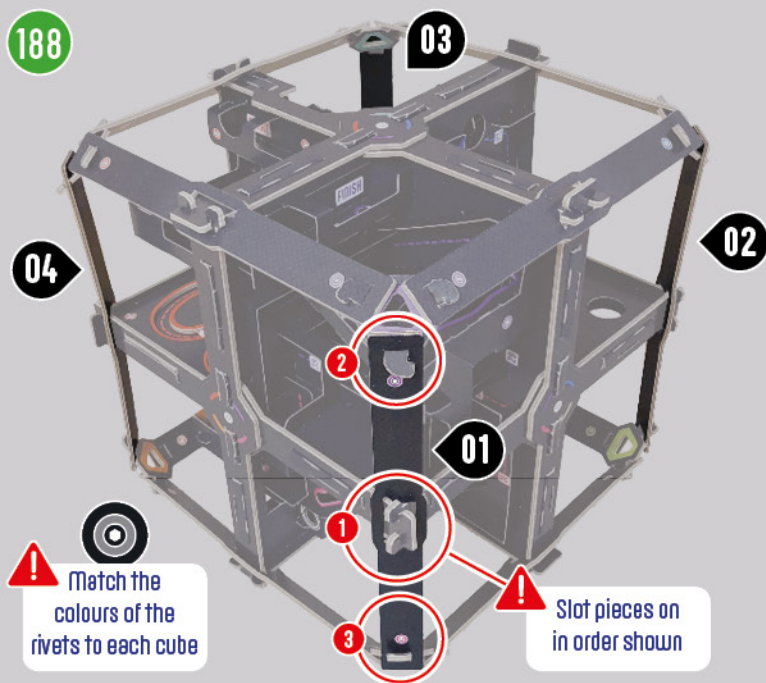


Need some help?
Scan here for video
instructions



Match the
colours to
each cube

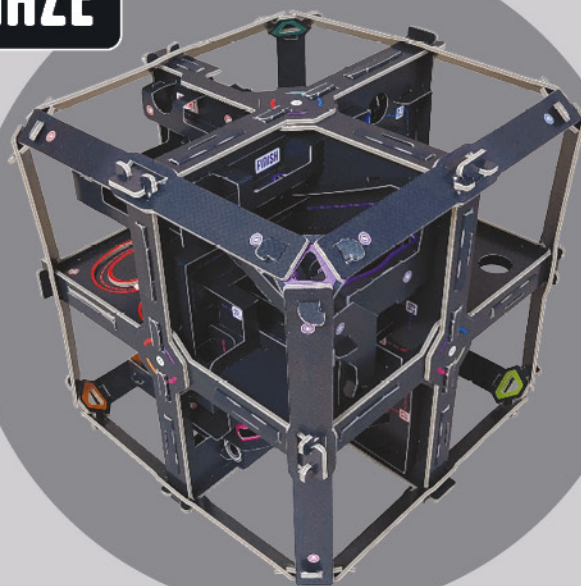
188



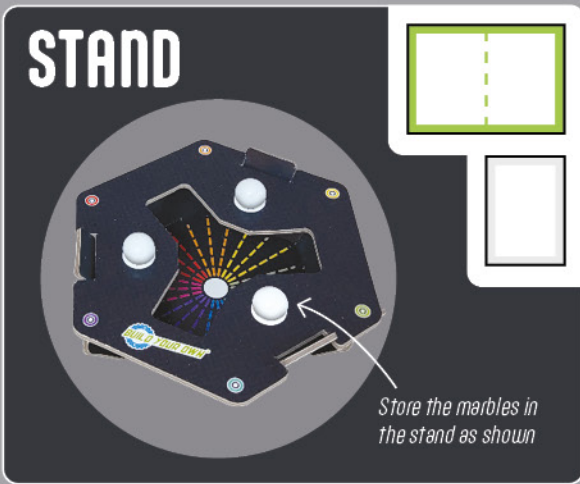
Match the
colours of the
rivets to each cube

Slot pieces on
in order shown

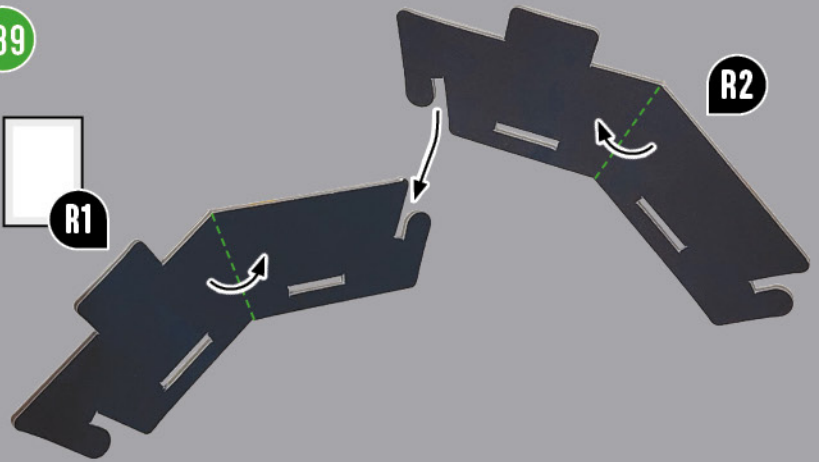
MAZE



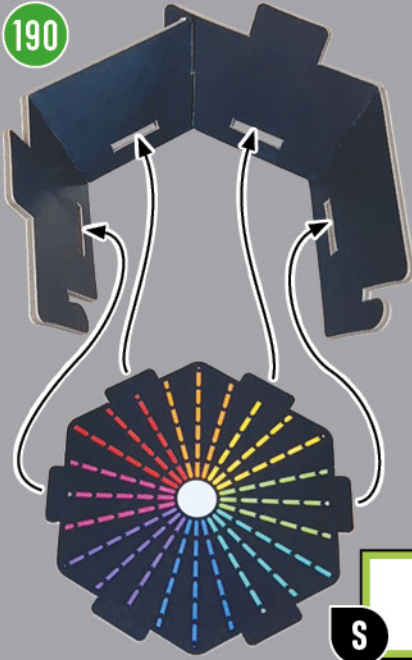
STAND



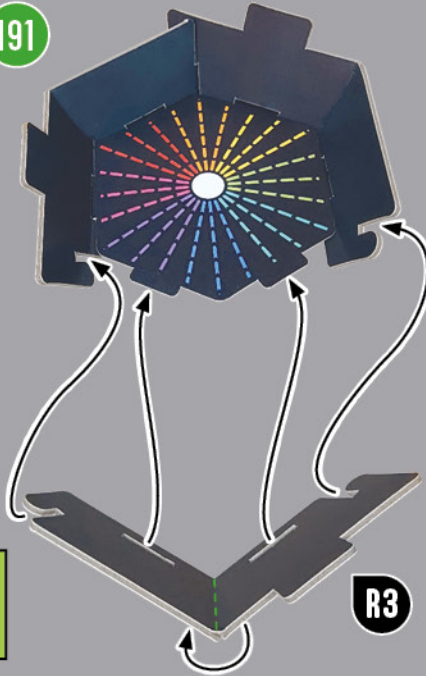
189



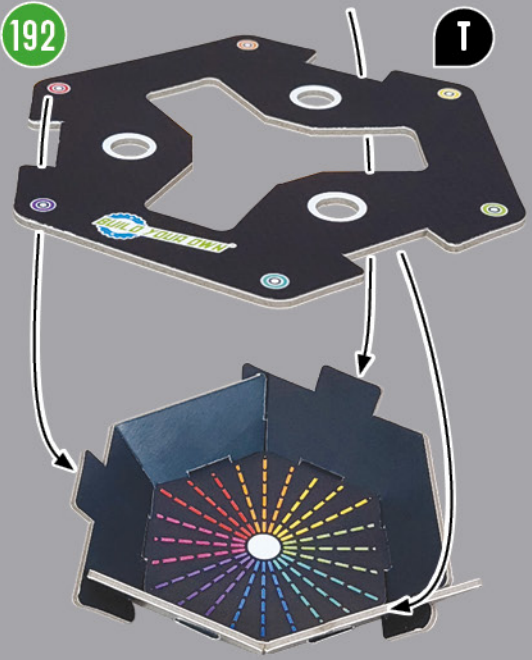
190



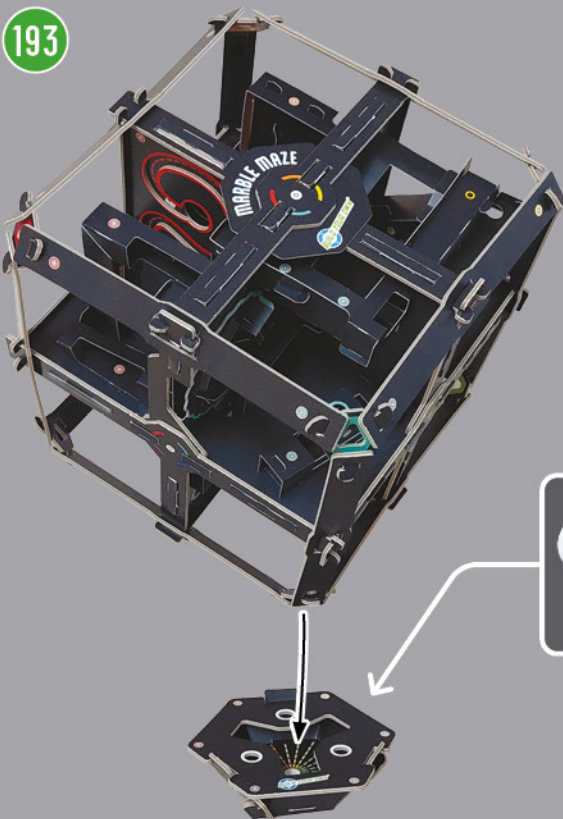
191



192

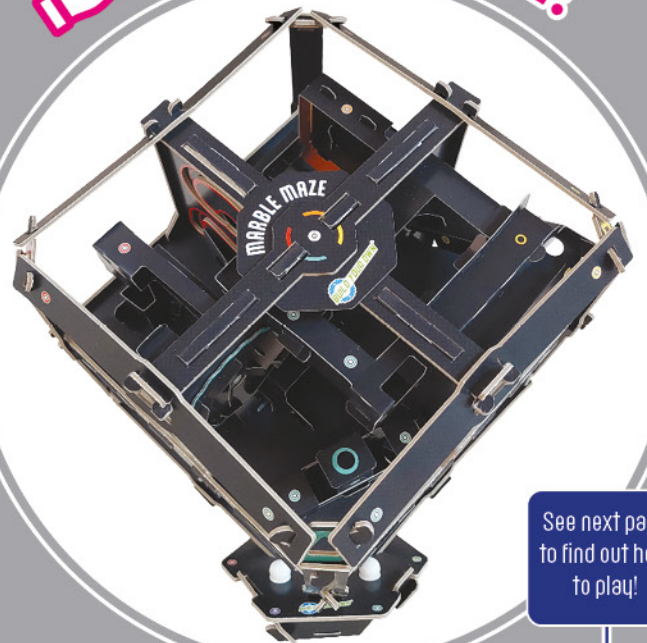


193



Store marbles in the stand

👍 YOU'RE DONE!



See next page to find out how to play!

HOW TO PLAY



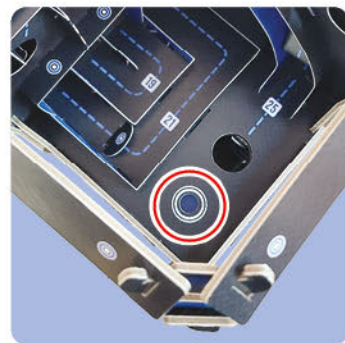
Place one of the marbles in the **START** position in the **red** cube.



Move the marble through the maze by holding the maze with both hands and tilting gently.



Follow the dashed line and numbered obstacles through the maze until you reach the **FINISH** in the **purple** cube.



As an extra challenge, try to get the marble into the highlighted pocket in each cube on your way to the finish.

EXTRA CHALLENGES

1

Time yourself!
How fast you can complete the Maze?

2

How far can you get without the marble falling out at all?

3

Race your friends! Who is fastest/gets the furthest?

4

Get as far as you can in the Maze in one minute.

5

Share your progress with us on social media @BYOKits

HELP!

If you get stuck building our kit or the dog has eaten a part, get in contact and we will do our best to help.

Go to

BuildYourOwnKits.com

Email us

support@buildyourownkits.com

Or talk to a real person!

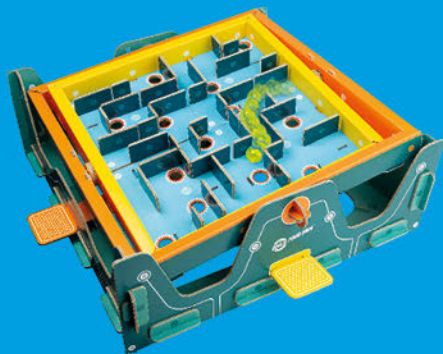
Phone us on 023 8062 5855



Scan here for quick access to our support page.



Find us on social media



WANT MORE?

Head over to our website to see all our amazing kits.

BuildYourOwnKits.com



WARNING: Choking hazard. Small parts and small balls. To be used under the direct supervision of an adult. Not suitable for children under 3 years. Retain this packaging for future reference. Recommended age 14+. Be aware of loose marbles falling from the maze. Always count and pack up marbles after use.

Paper Engine Ltd, MacLehose House, Unit A, Woodside Trade Centre, 34 Parham Drive, Eastleigh, Hampshire, SO50 4NU, UK
EU Authorised Representative, Vulcan Consulting, 38/39 Fitzwilliam Square West, Dublin 2, D02 NX53, Ireland

© Paper Engine Ltd 2025 www.paperengine.com Product Code: BYO 015 R1 Printed and manufactured in Heshan, China by Hung Hing Printing Group 05/2025