

MARBLE MAZE



Use the **Removal Tool** to push out the smaller pieces of card.



Pre-crisp **green** dotted lines before each step unless otherwise stated.

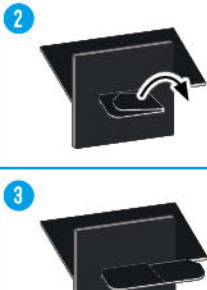
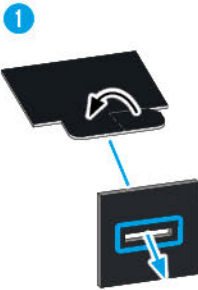


If you get stuck, try looking at the next few steps to help you out.

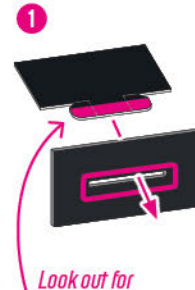


Don't rush! Make yourself a cuppa and take your time while building.

Follow these instructions when you see **BLUE** slot outlines and arrows in a step



Follow these instructions when you see **PINK** slot outlines and arrows in a step



Look out for the **PINK** tabs

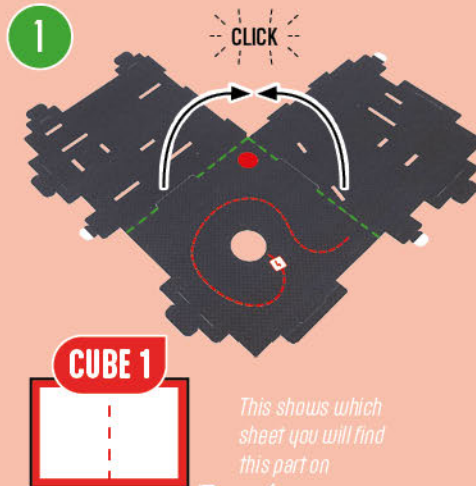


CUBE 1



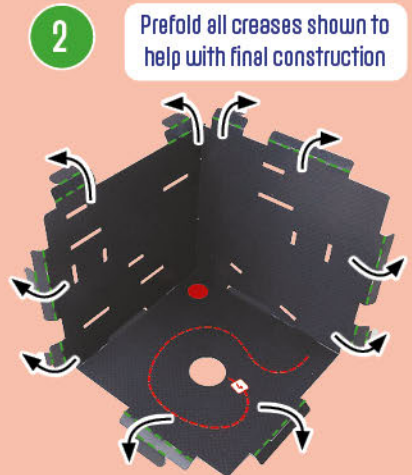
This shows the sheets you need to find for each section

This is what the cube will look like when complete



CUBE 1

This shows which sheet you will find this part on



Prefold all creases shown to help with final construction

Build with a friend
Take a booklet each

Each cube can be built independently before connecting together in Booklet C.

These outlines highlight the slots the part goes into



1.1

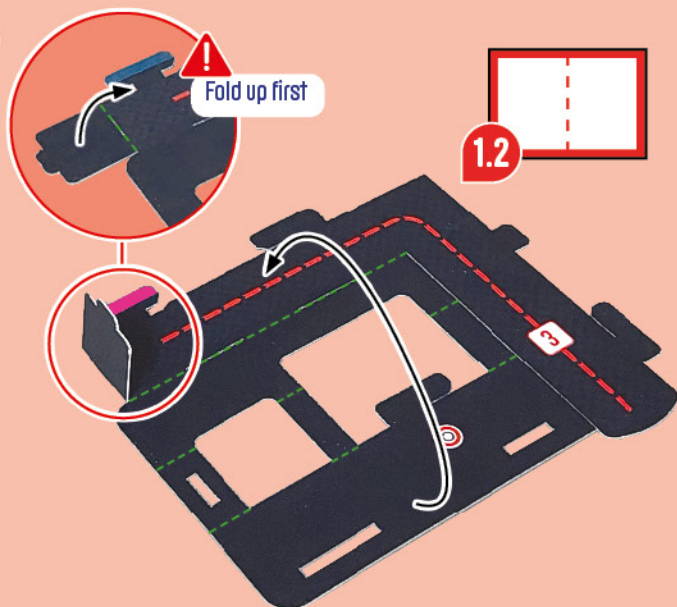


The white box shows the part finished and in place, check here first if you're not sure what to do

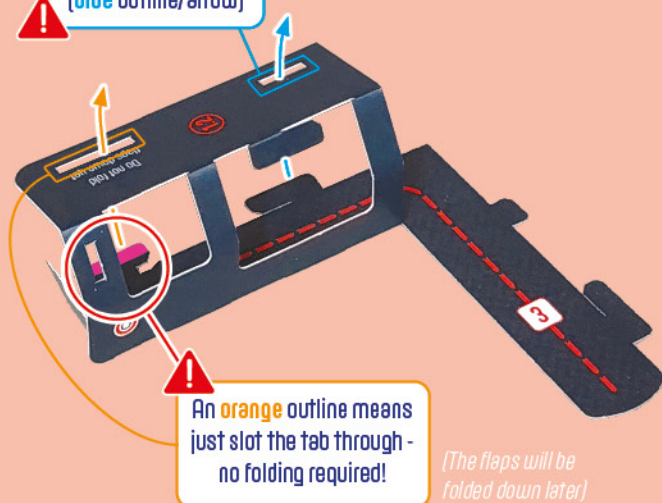


Put to one side until Step 6

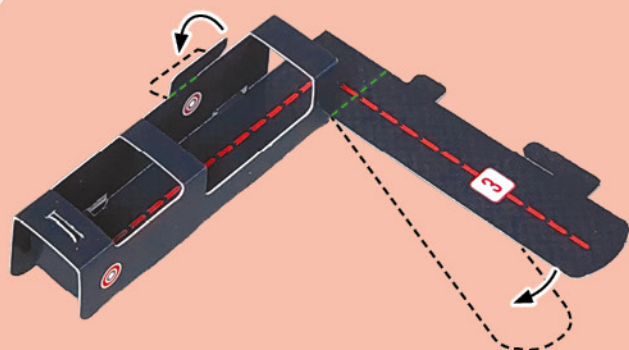
4



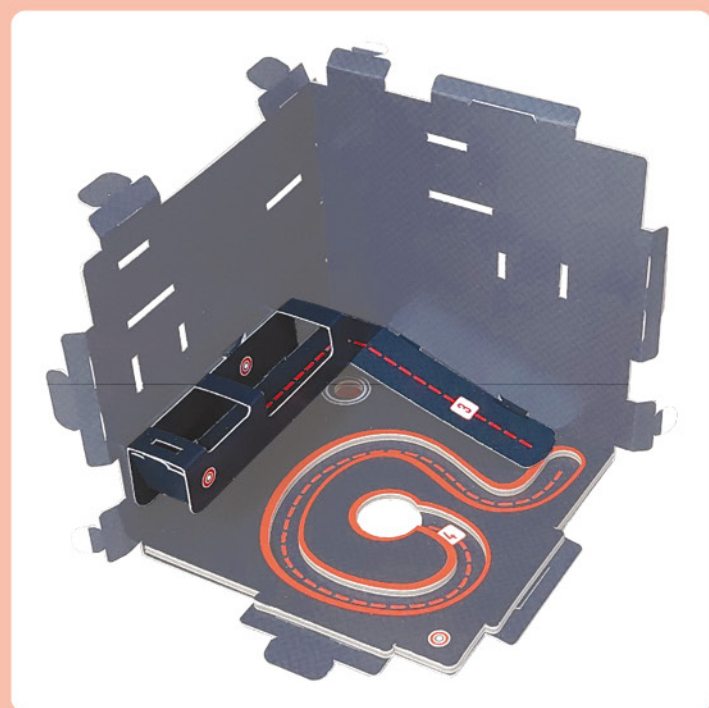
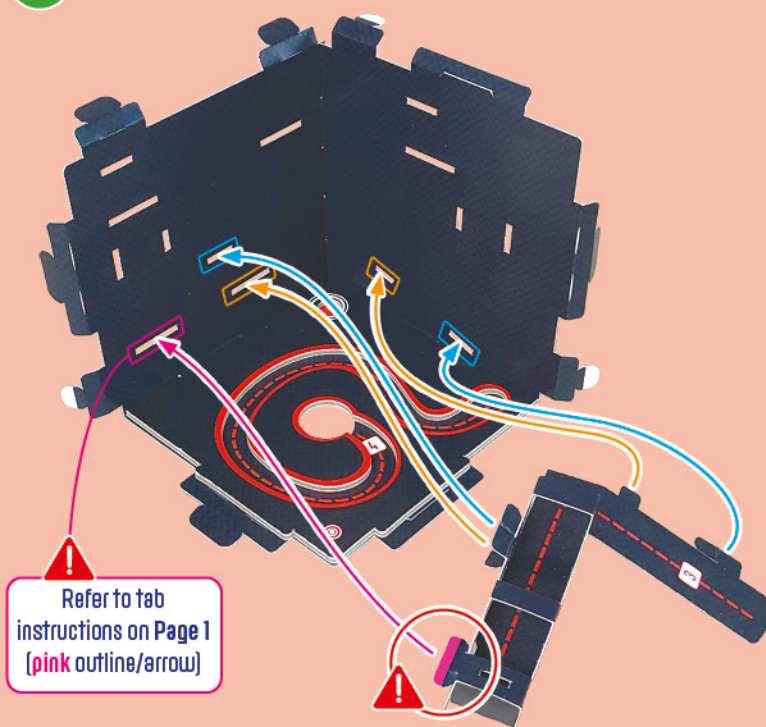
Refer to tab instructions on Page 1 (blue outline/arrow)



5

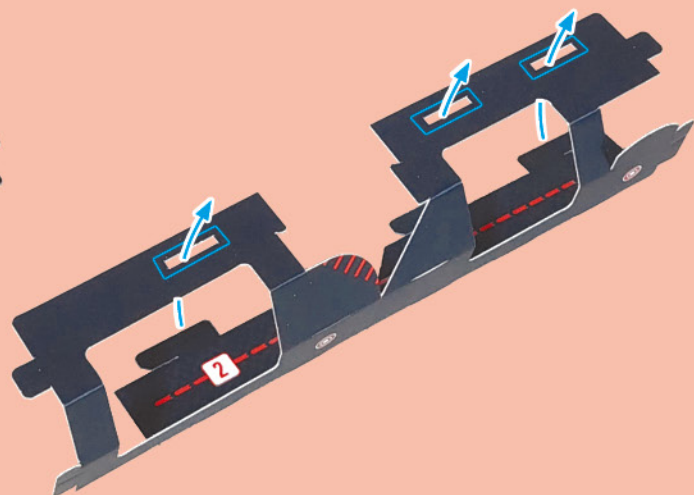
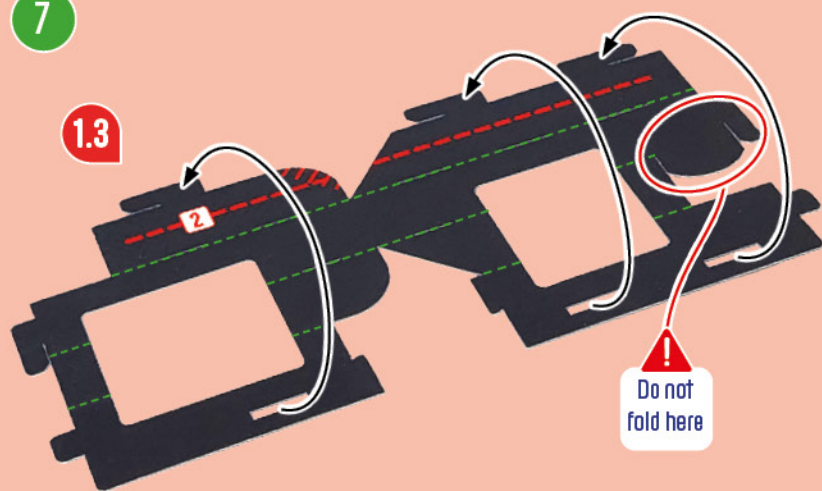


6

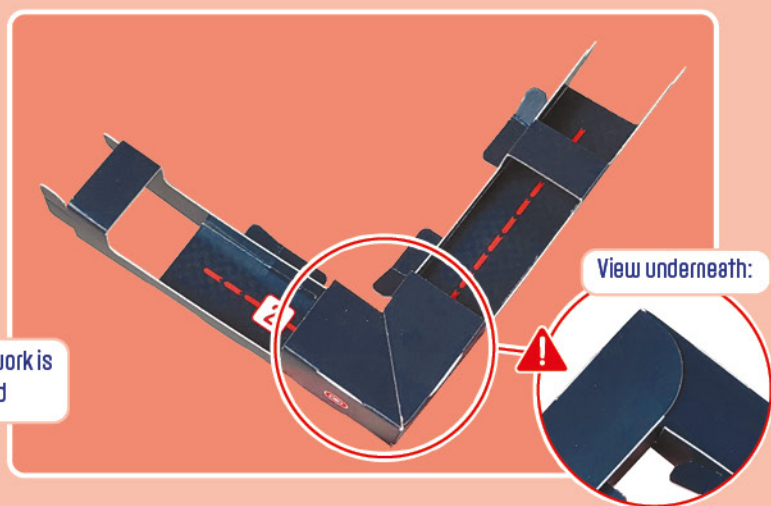
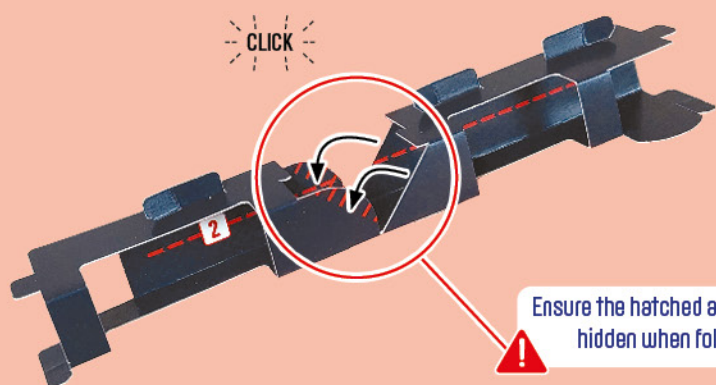


7

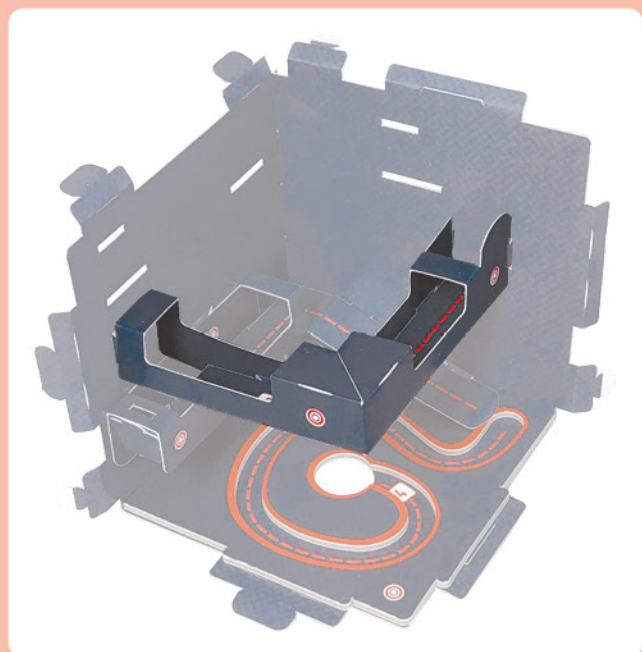
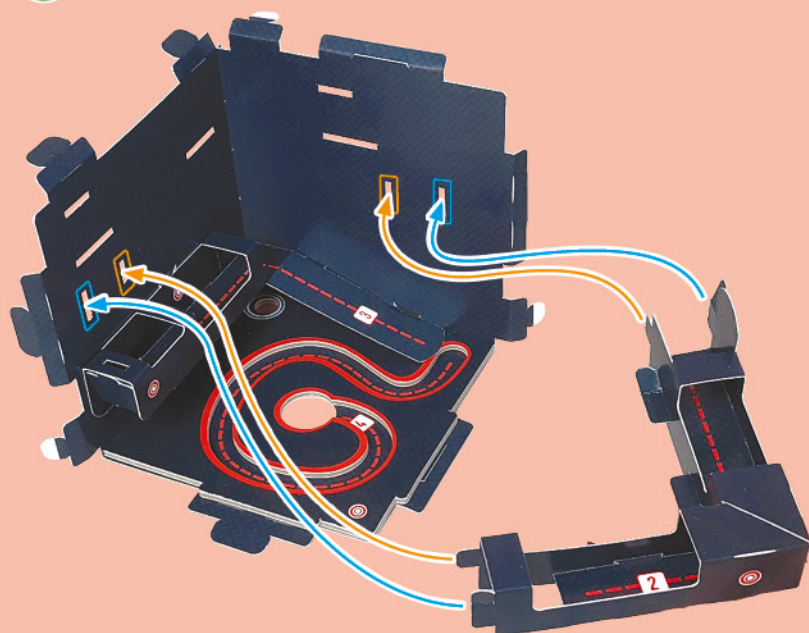
1.3

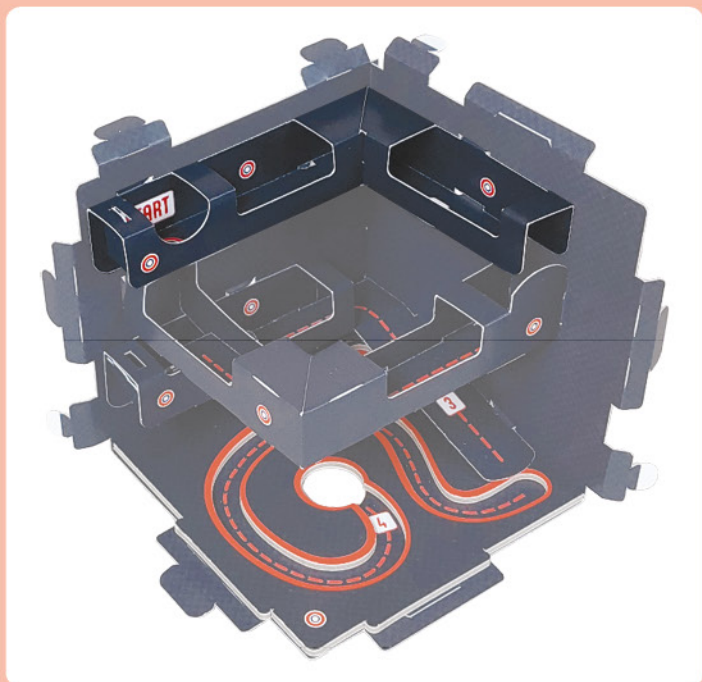
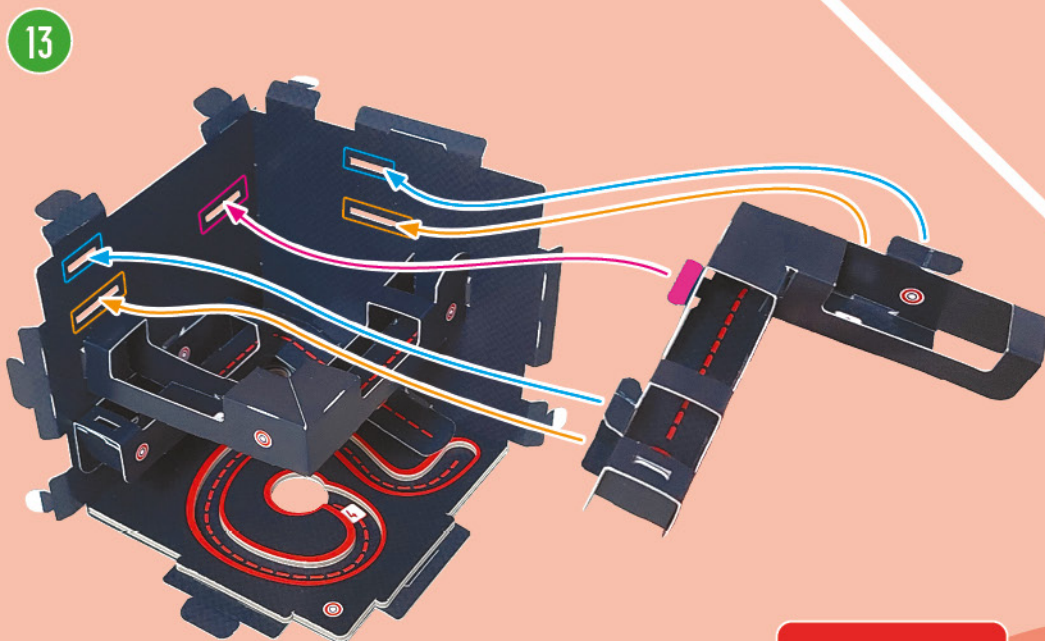
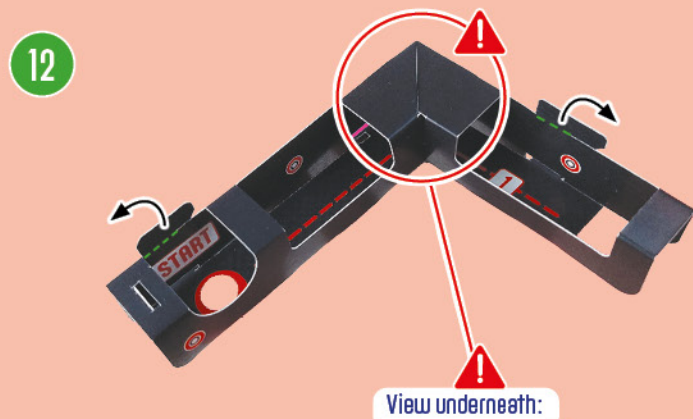
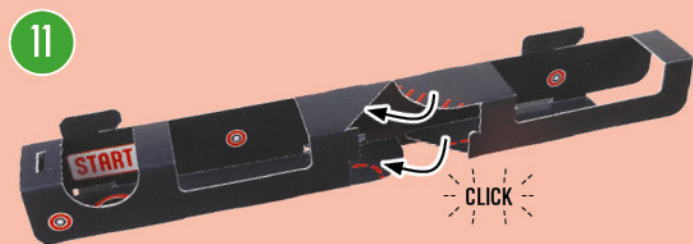
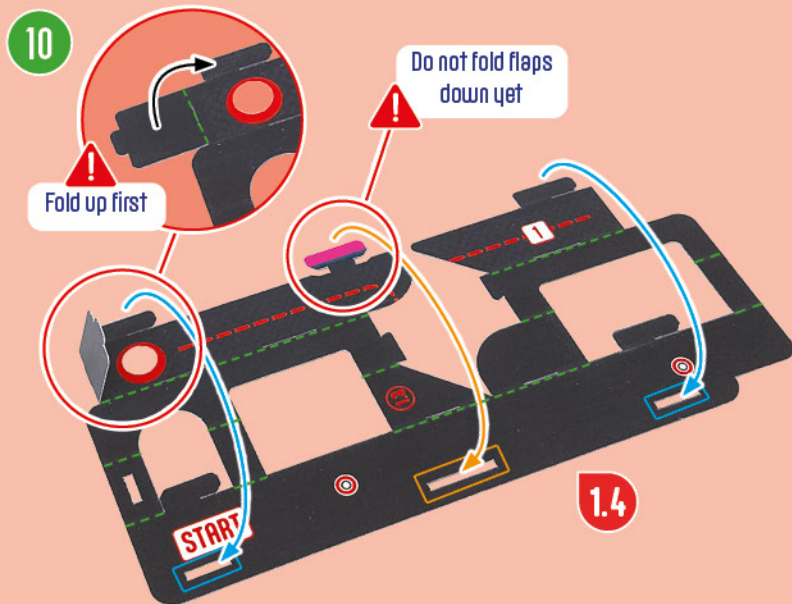


8



9





CUBE 1

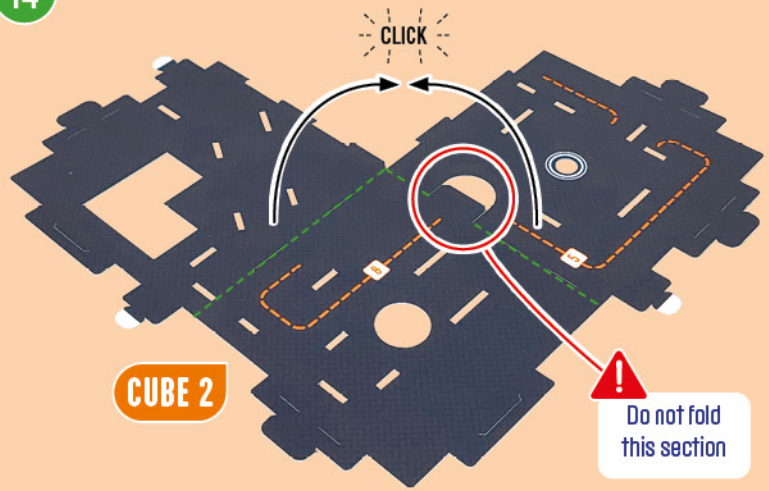


Put to one side
until Step 150

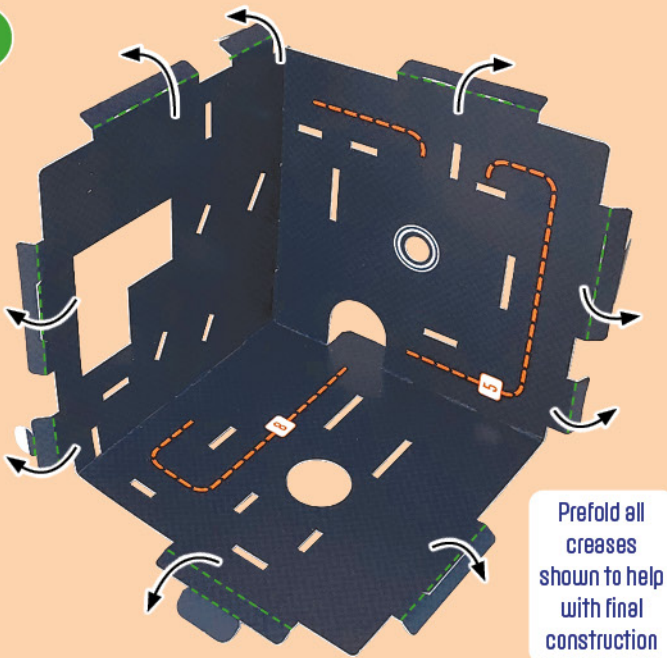
CUBE 2



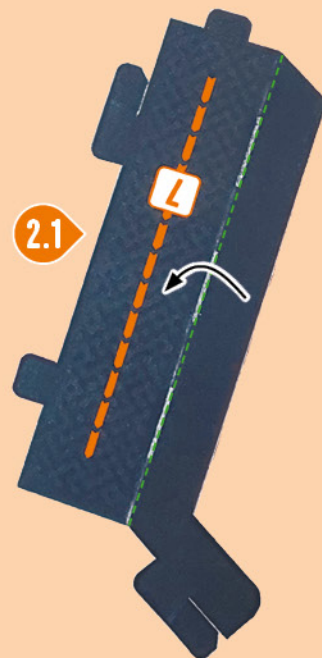
14



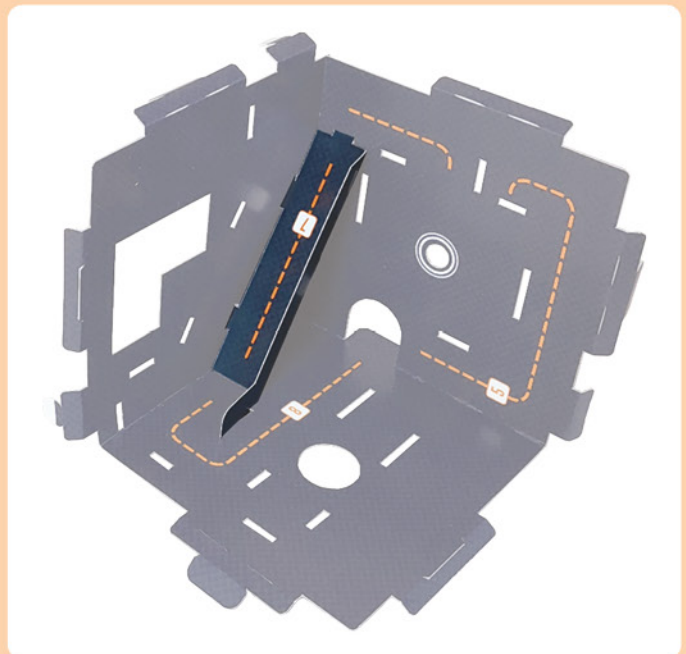
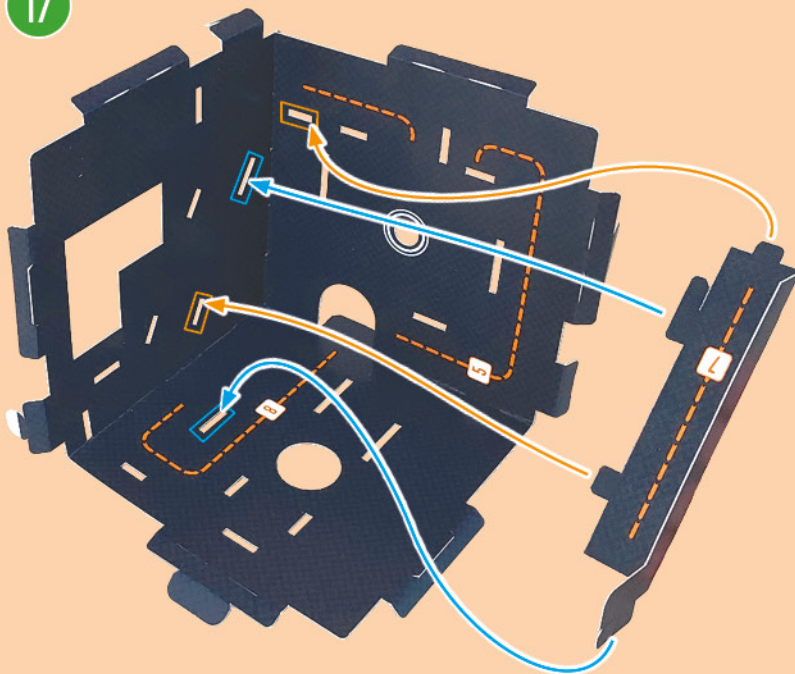
15



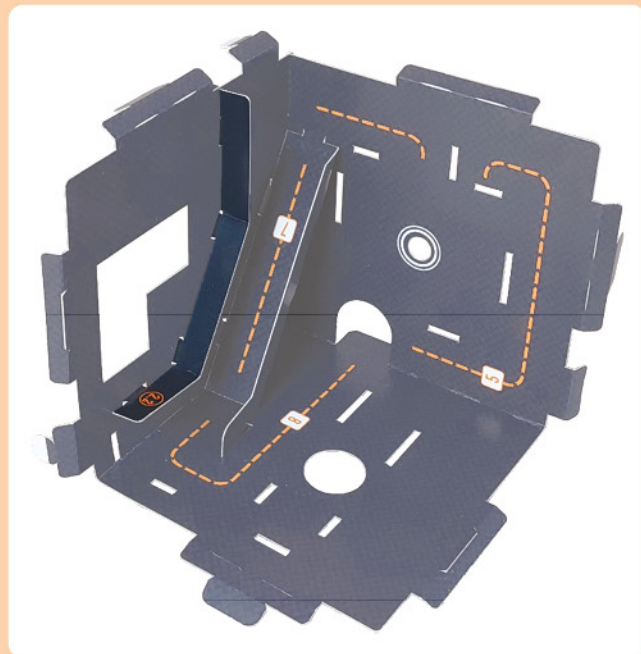
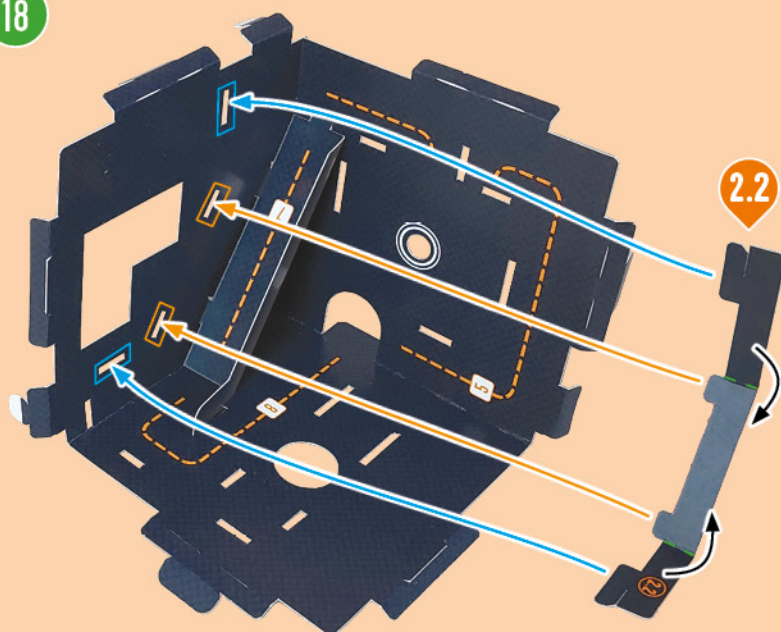
16



17

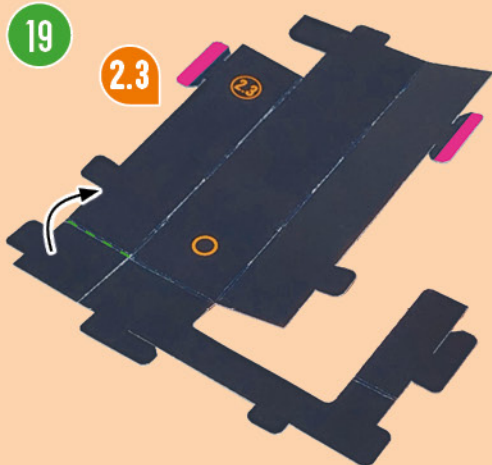


18

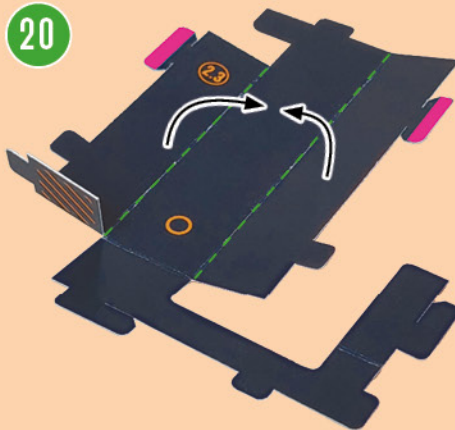


19

2.3



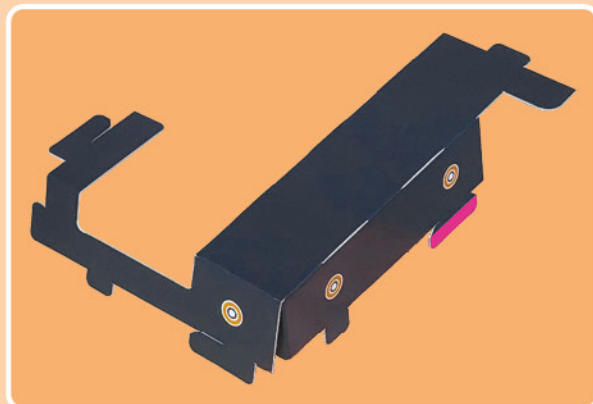
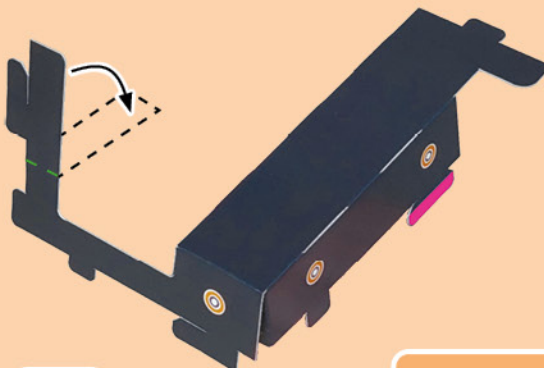
20



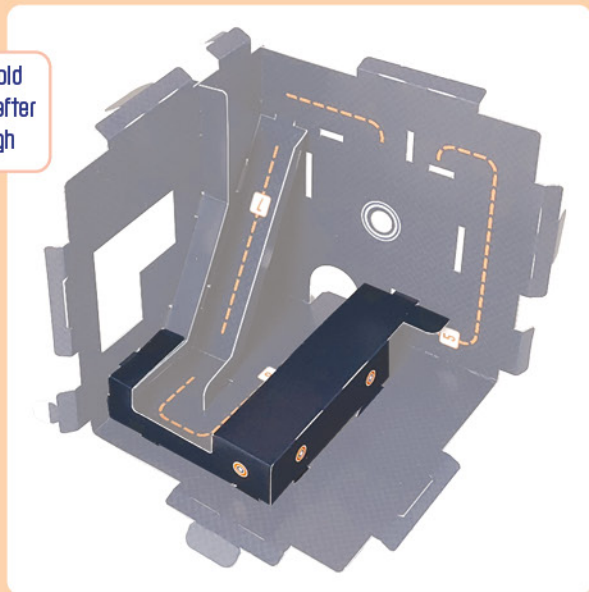
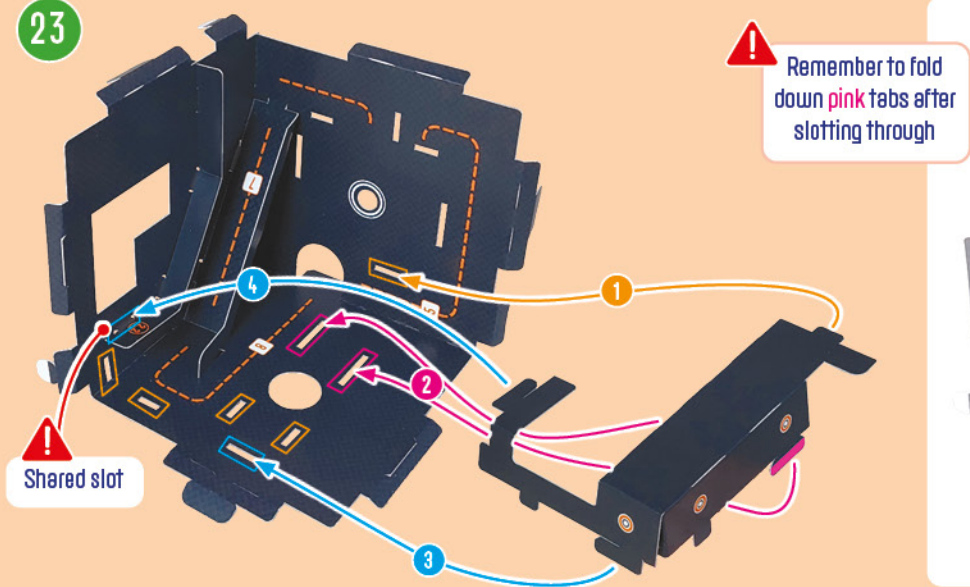
21



22



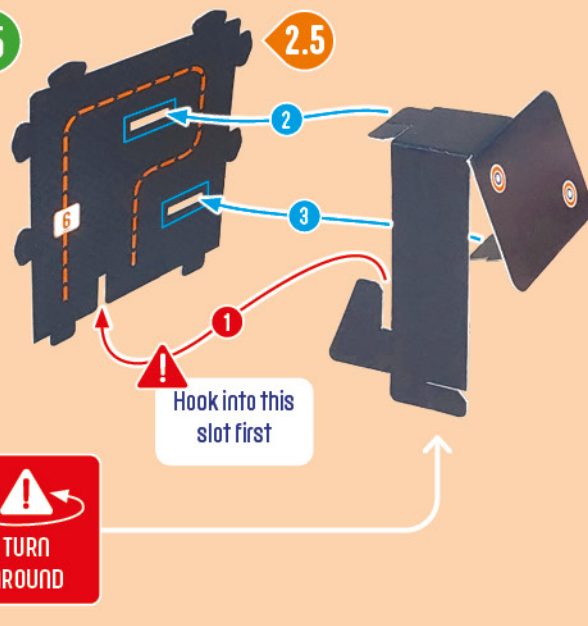
23



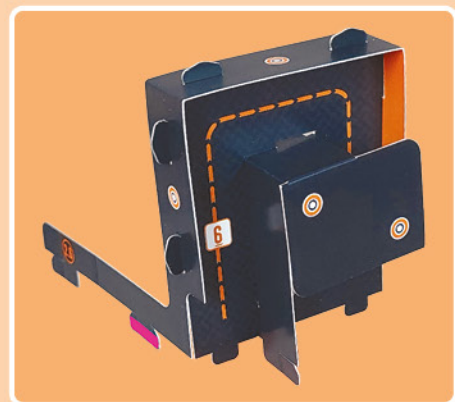
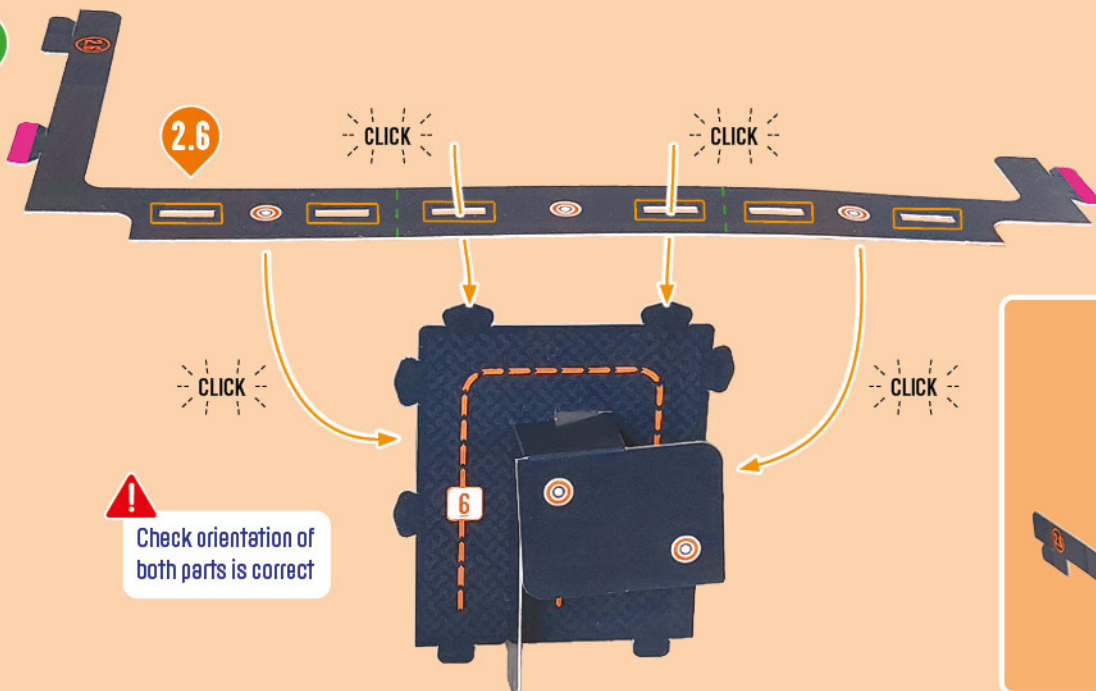
24



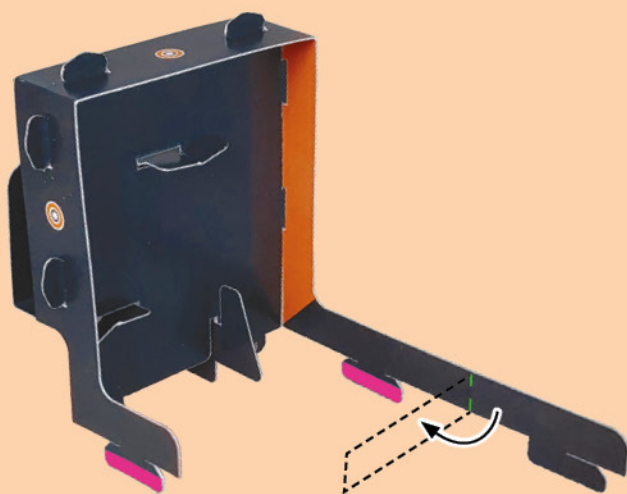
25



26



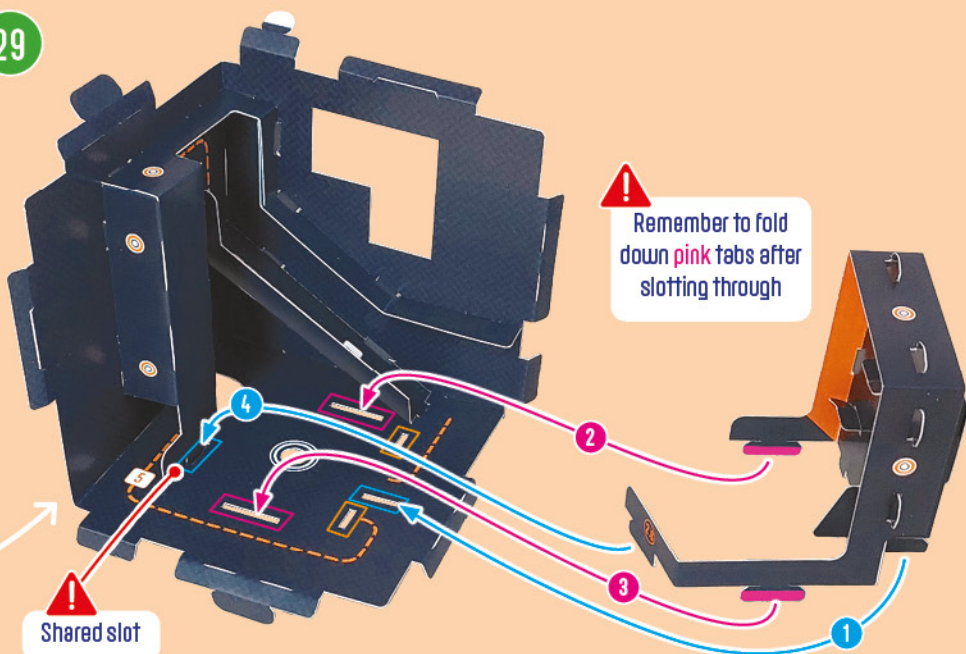
27



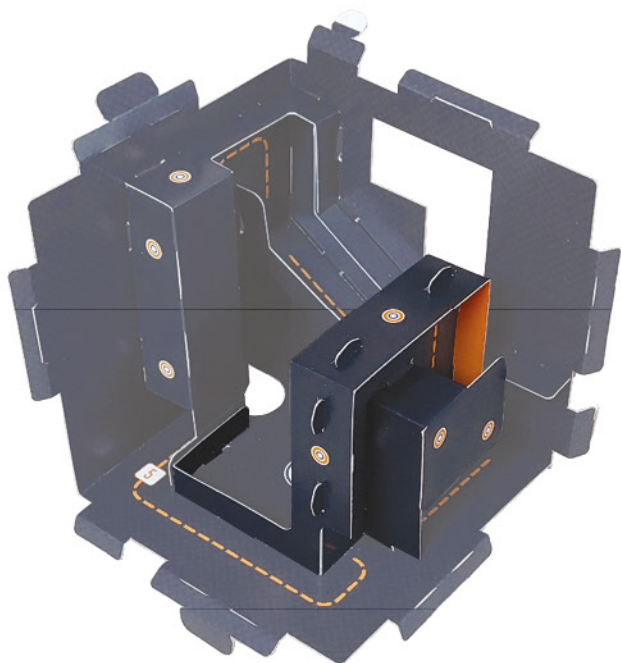
28



29



CUBE 2



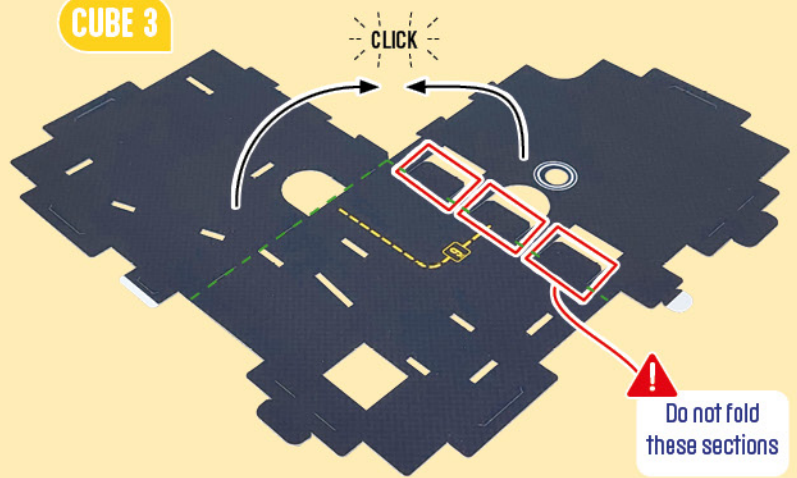
Put to one side
until Step 150

CUBE 3

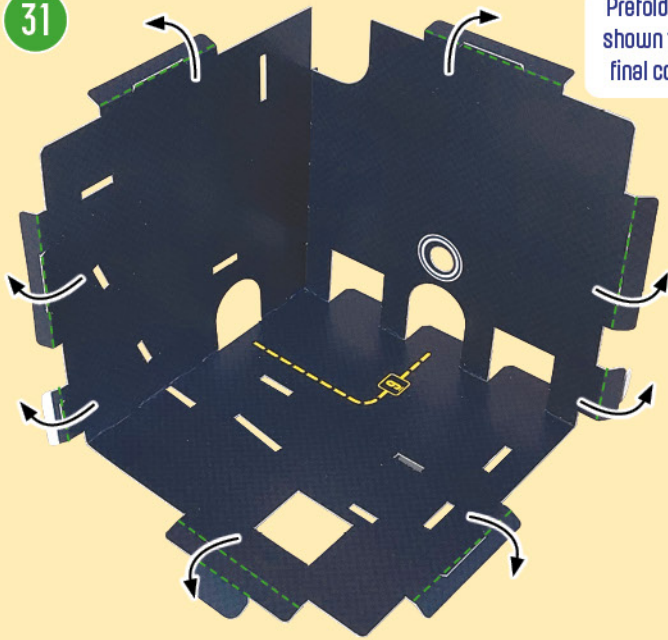


30

CUBE 3

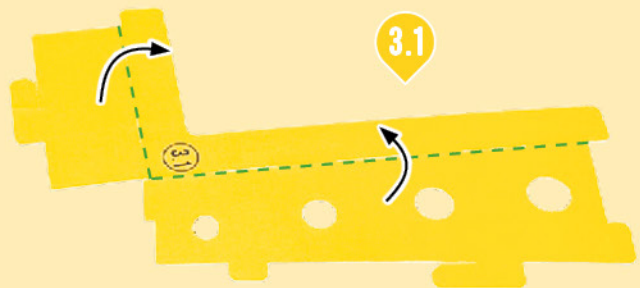


31

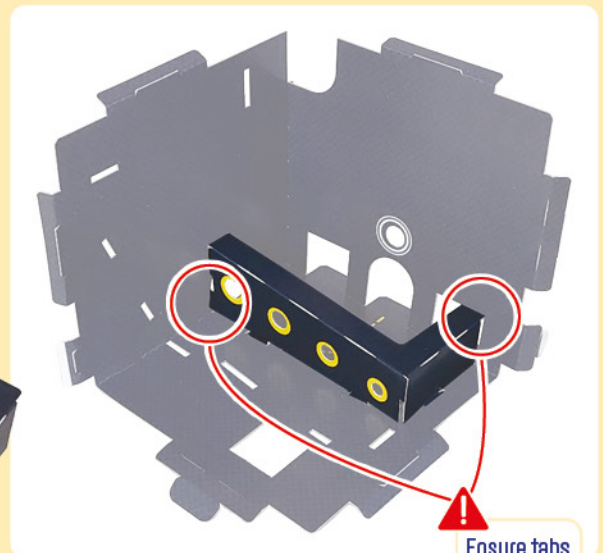
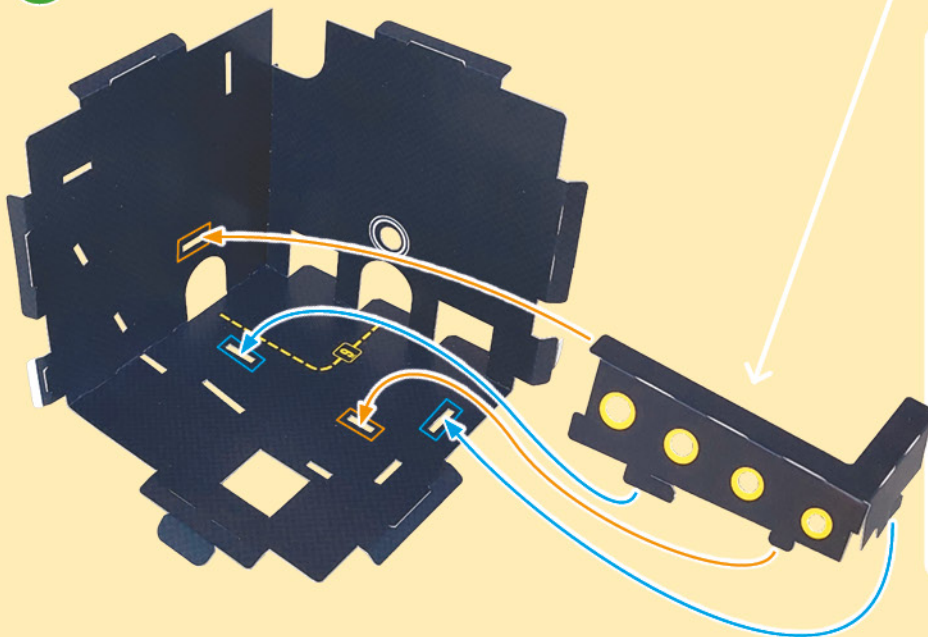


Prefold all creases shown to help with final construction

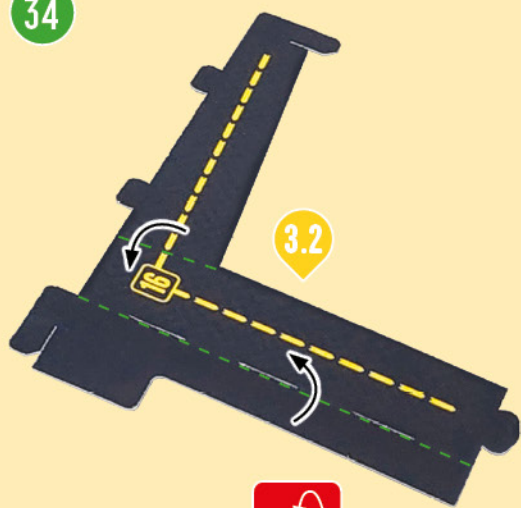
32



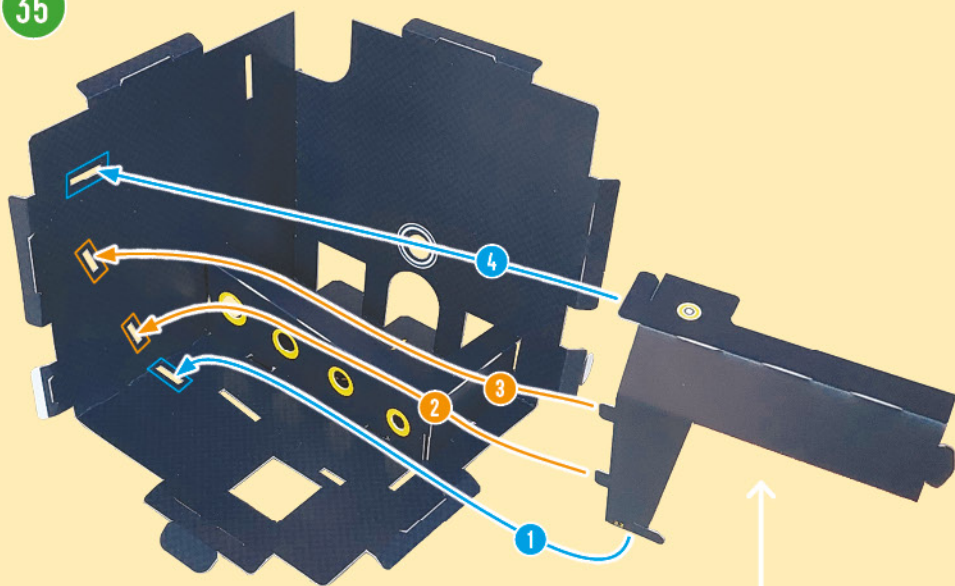
33



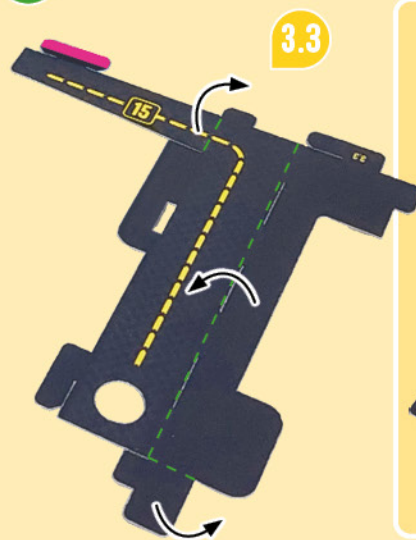
34



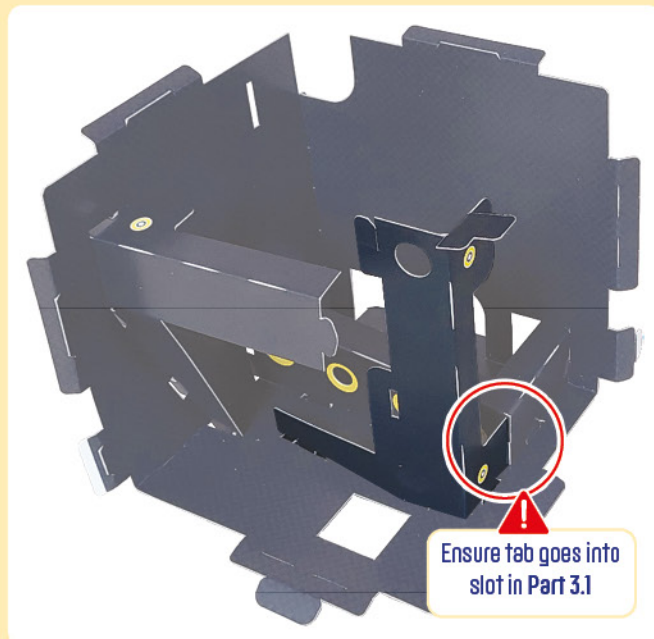
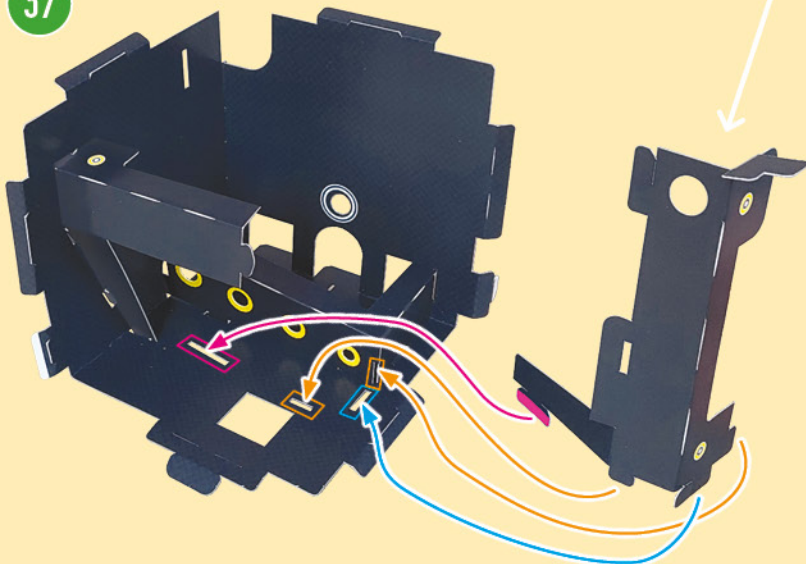
35



36

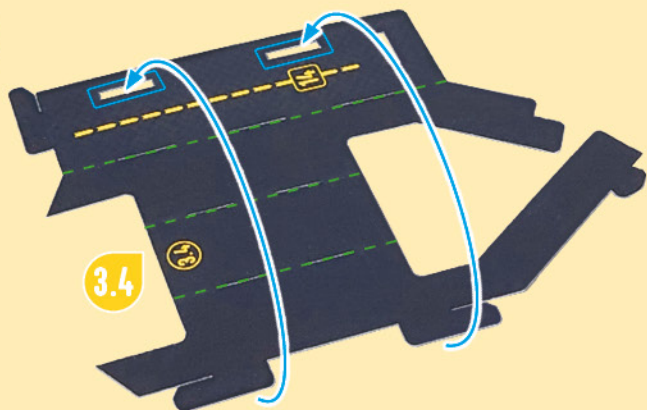


37

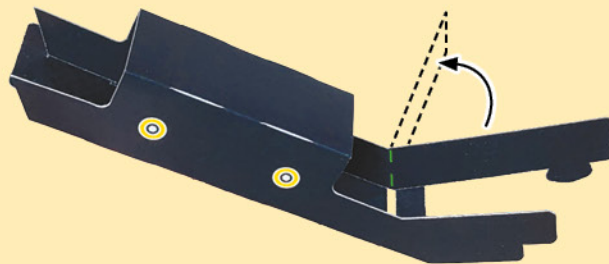


Ensure tab goes into slot in Part 3.1

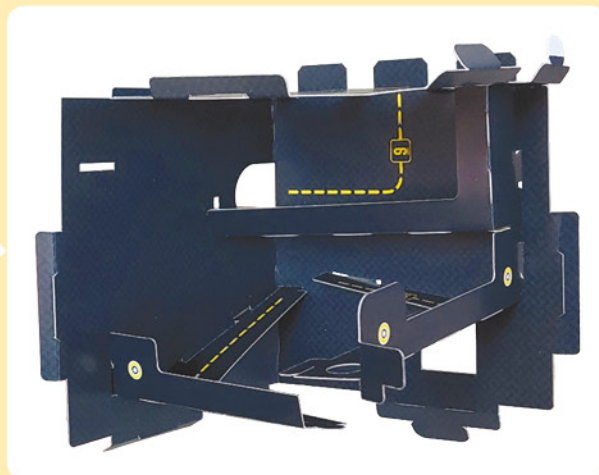
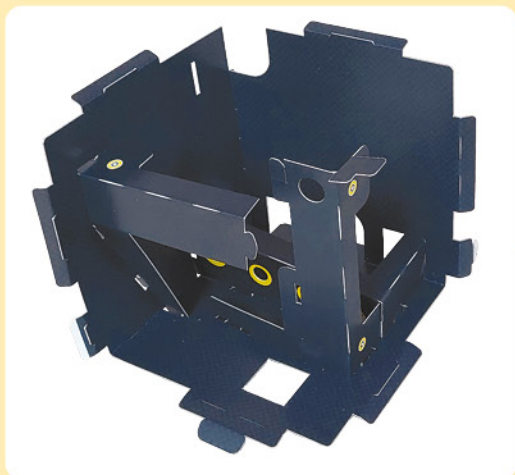
38



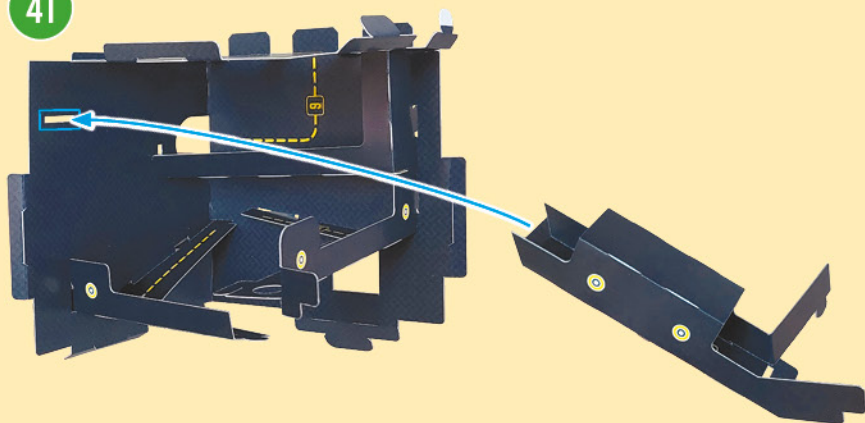
39



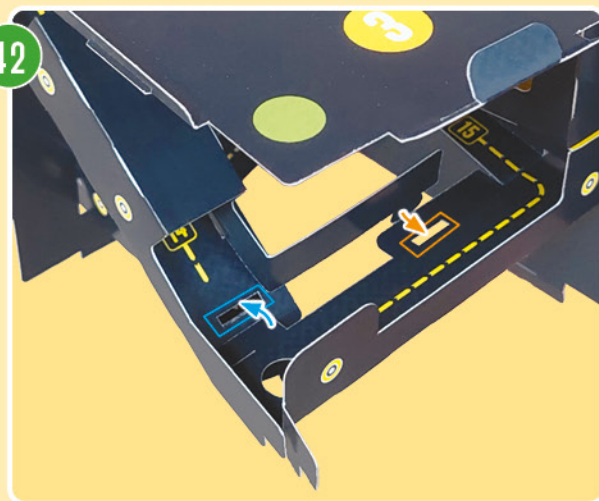
40



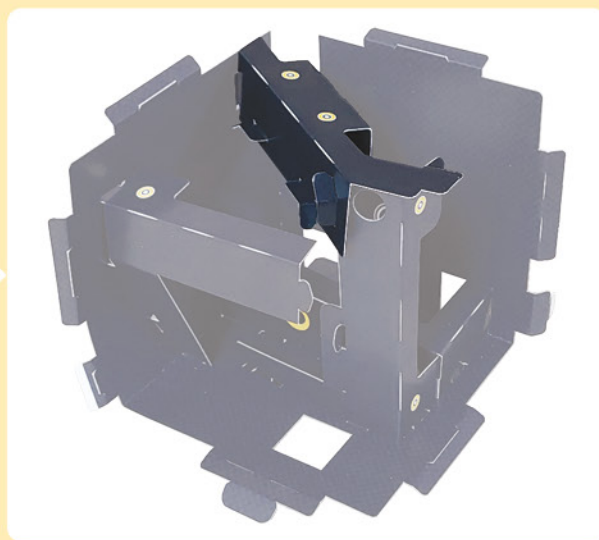
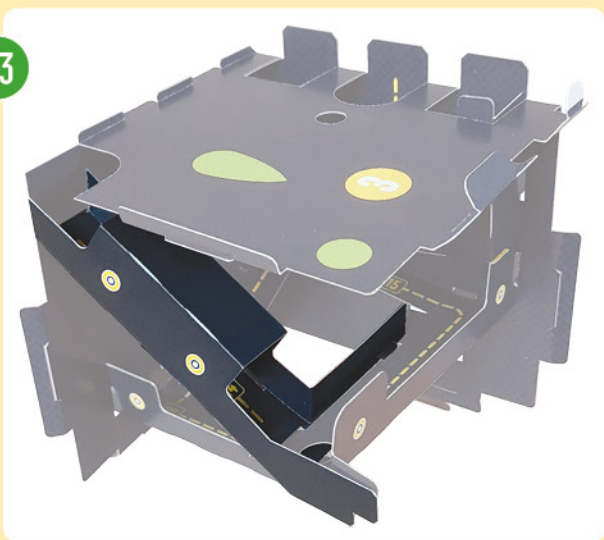
41



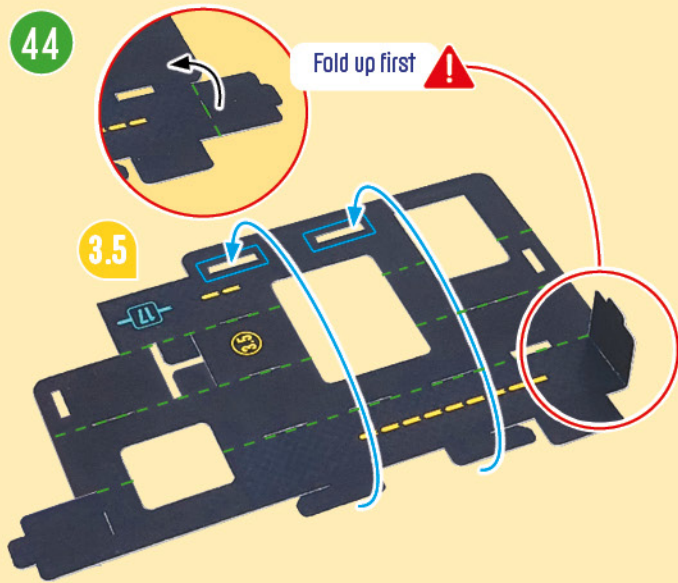
42



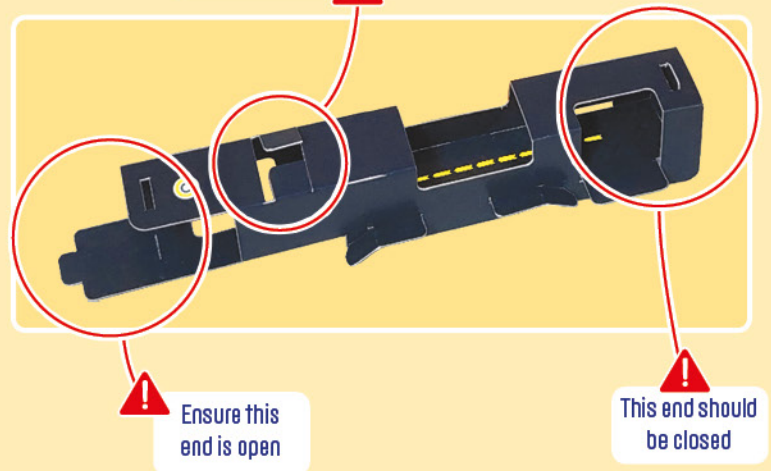
43



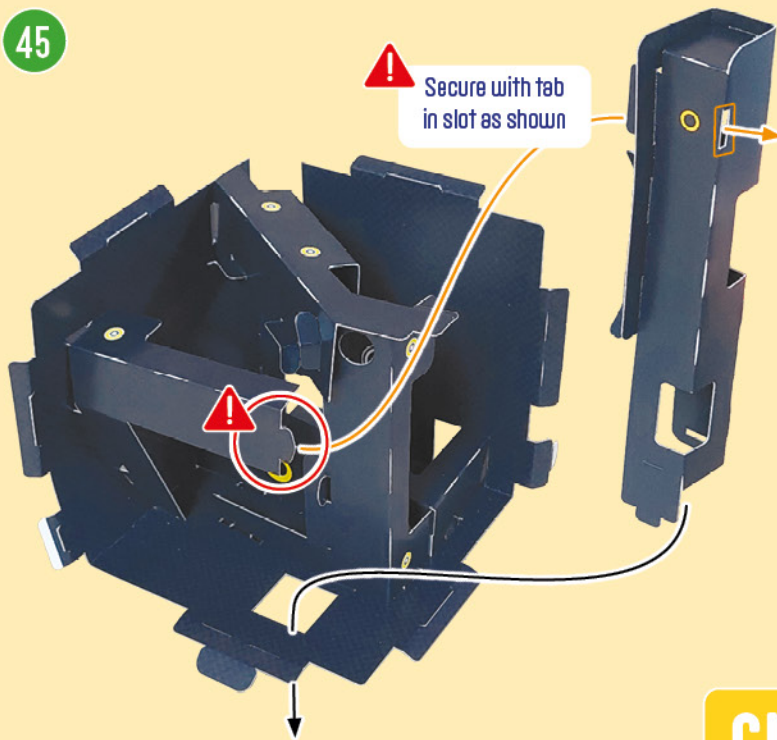
44



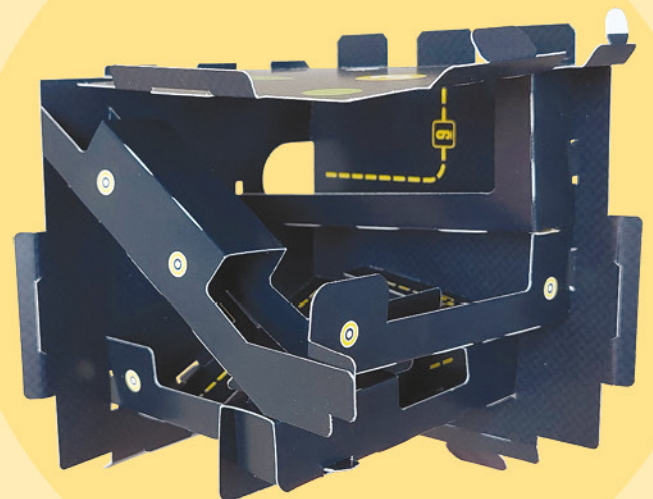
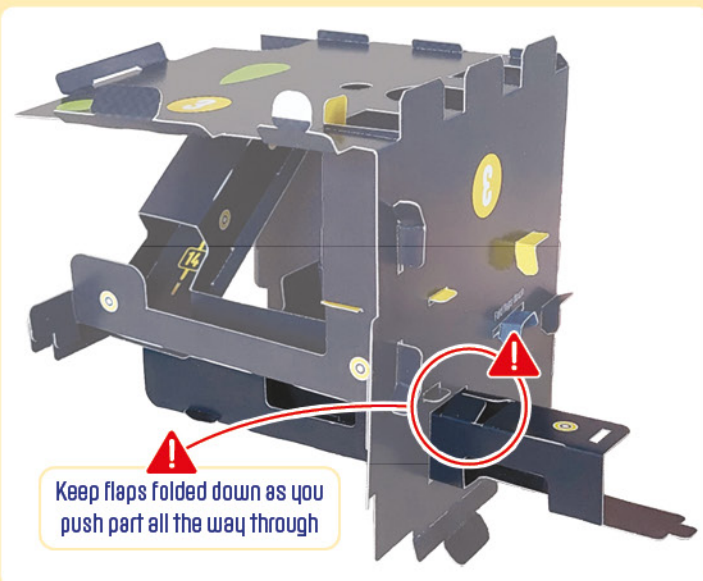
Ensure flaps are folded down



45



CUBE 3



Put to one side until Step 153

CUBE 4

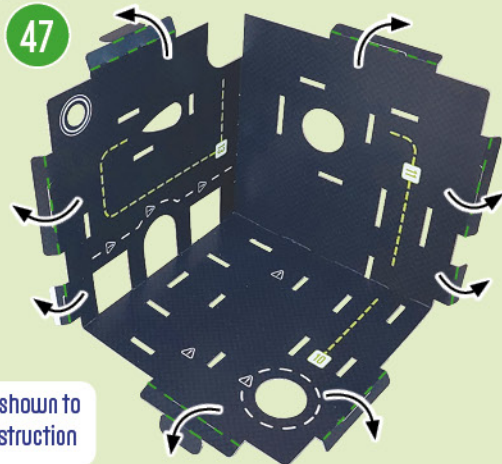


46



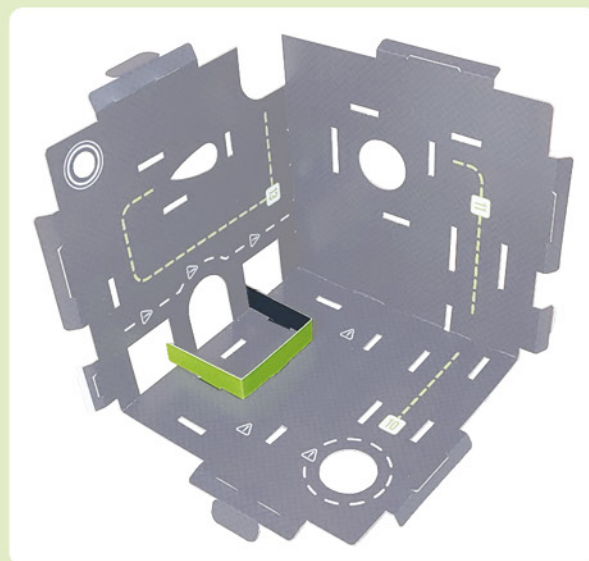
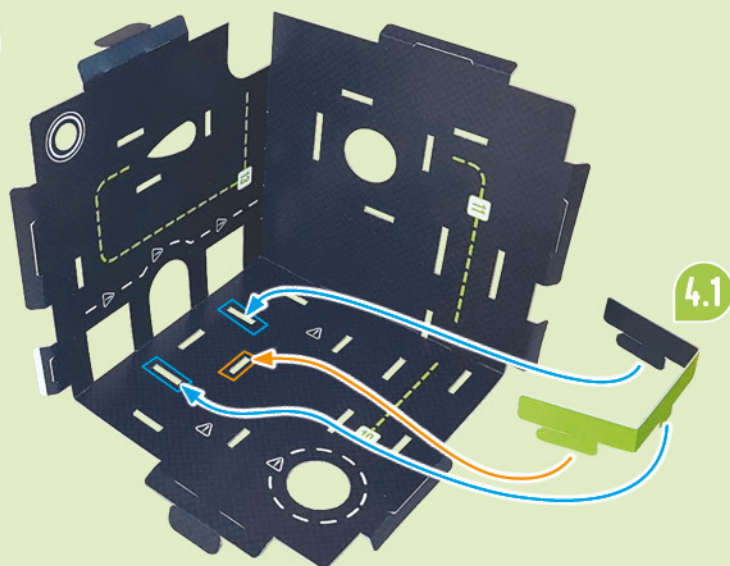
CUBE 4

47

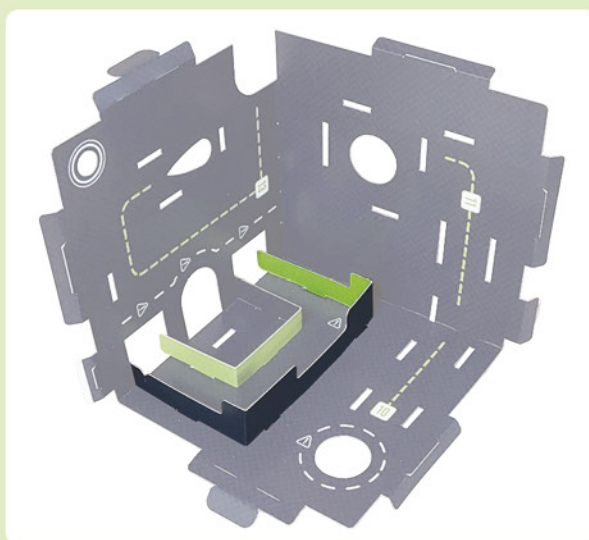
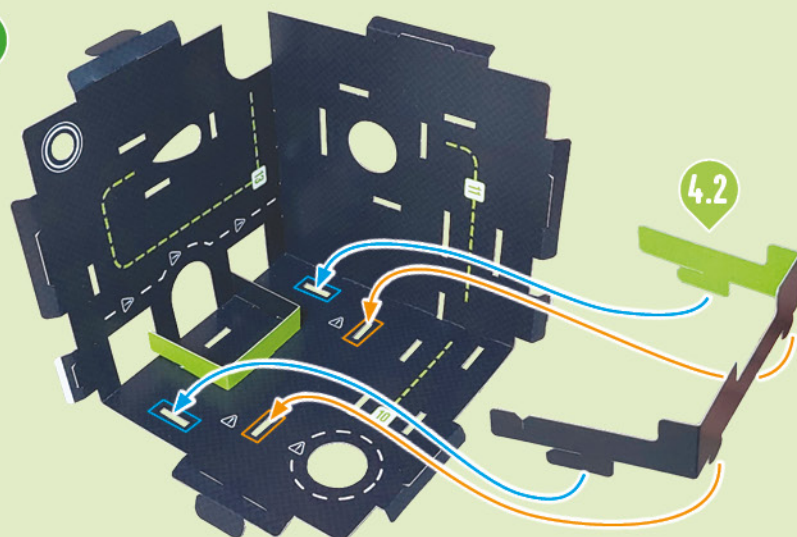


Prefold all creases shown to help with final construction

48

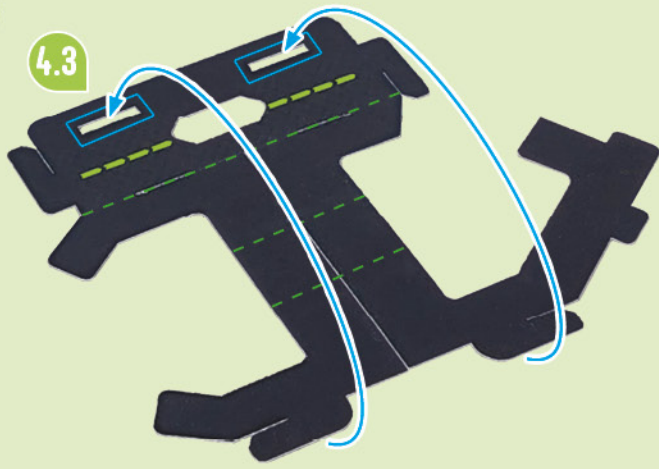


49

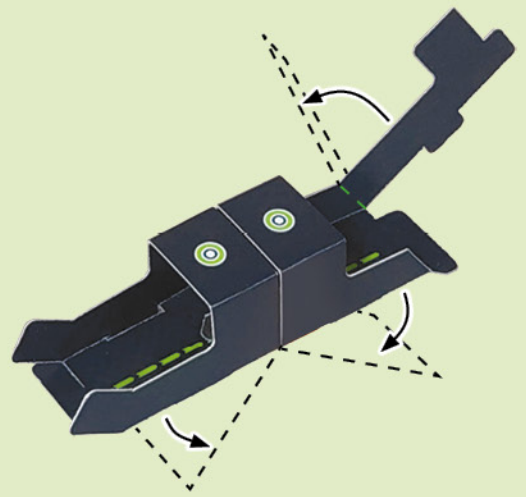


50

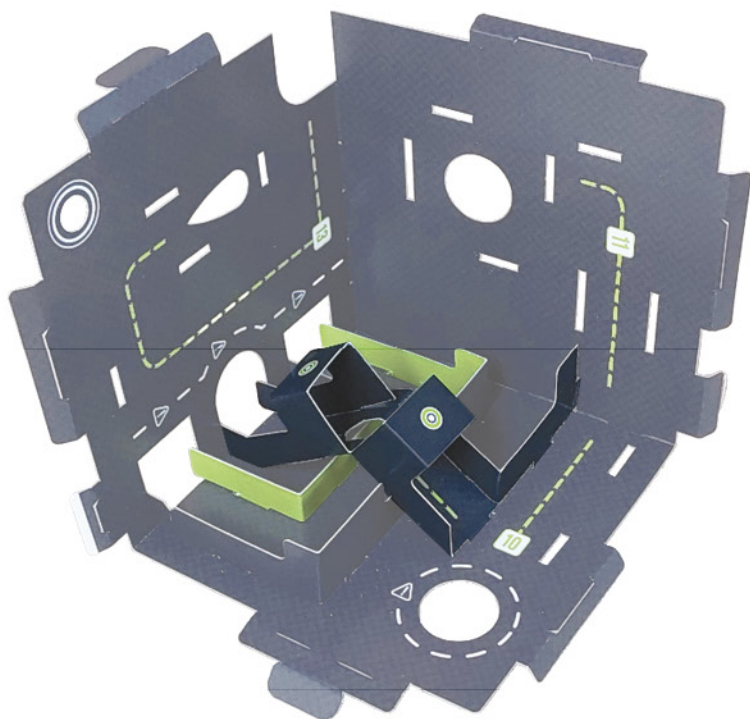
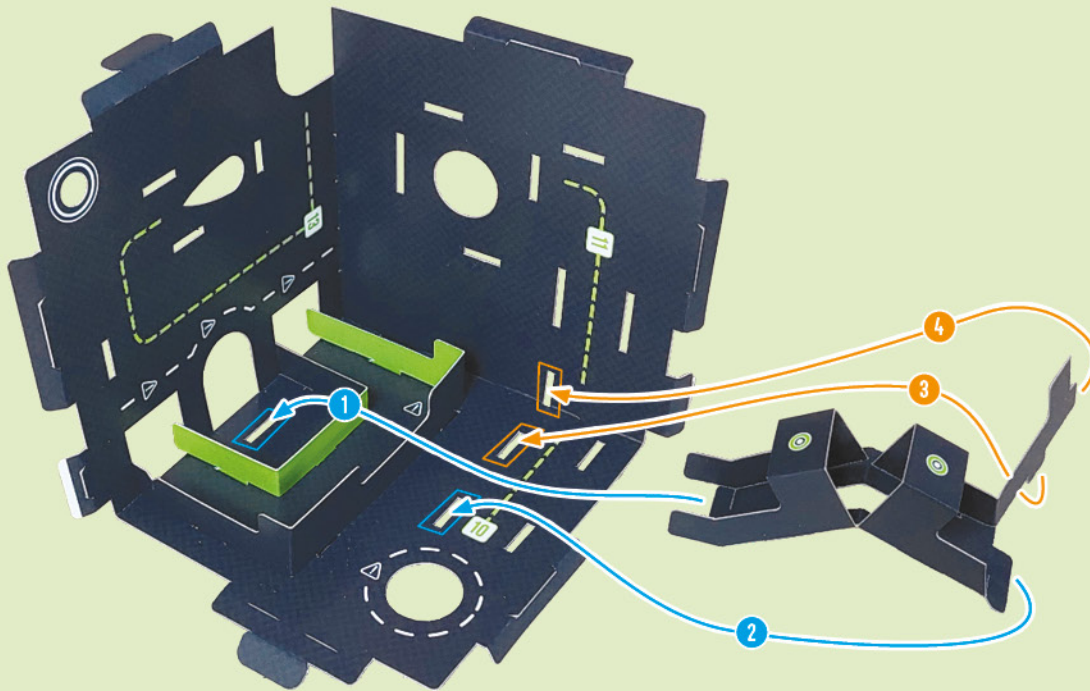
4.3



51



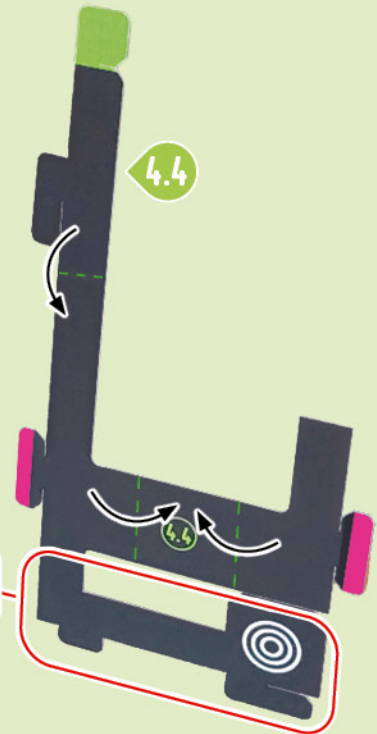
52



53

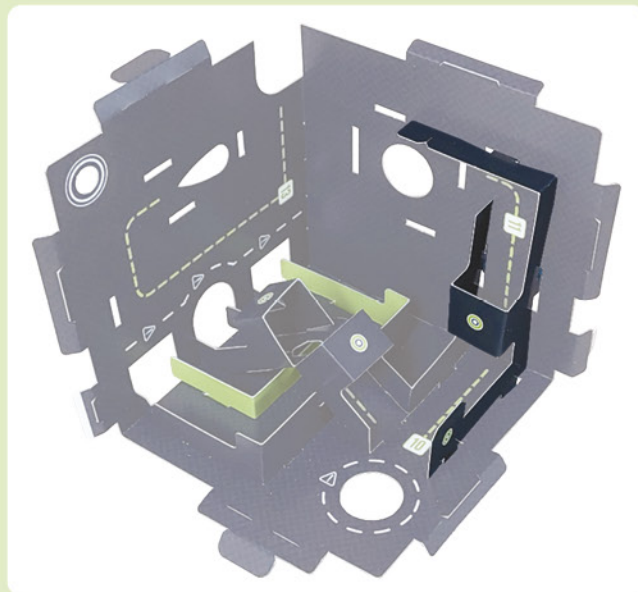
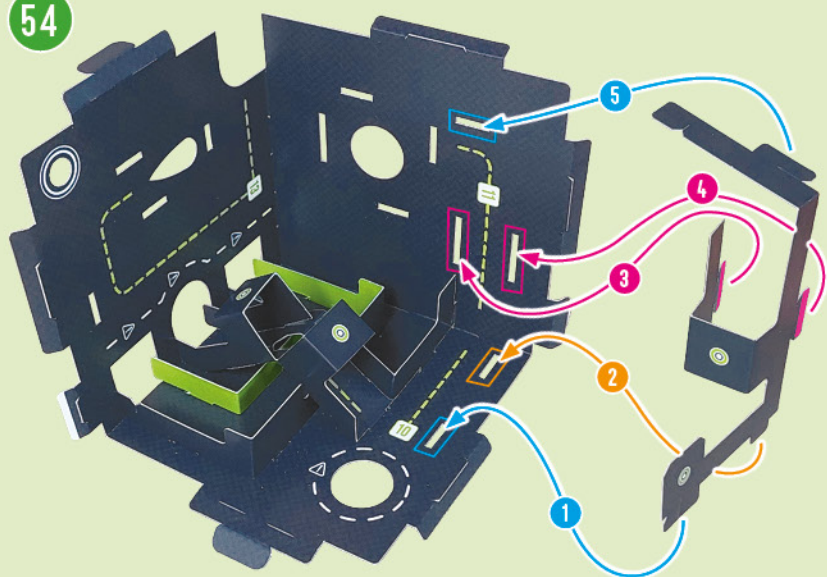
4.4

Do not fold here



TURN OVER

54

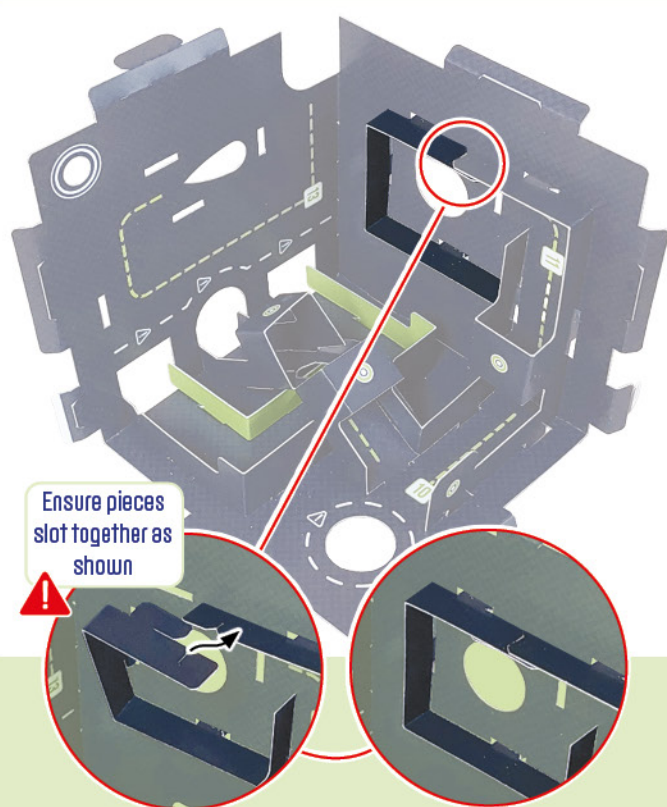
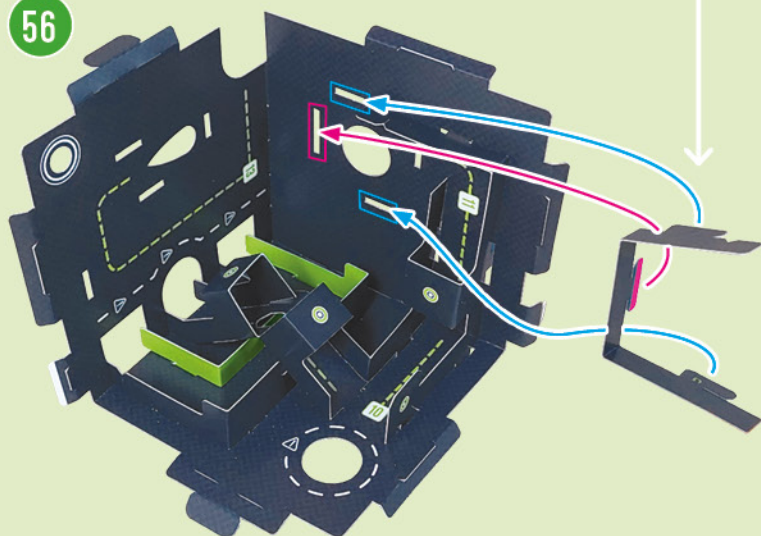


55

4.5

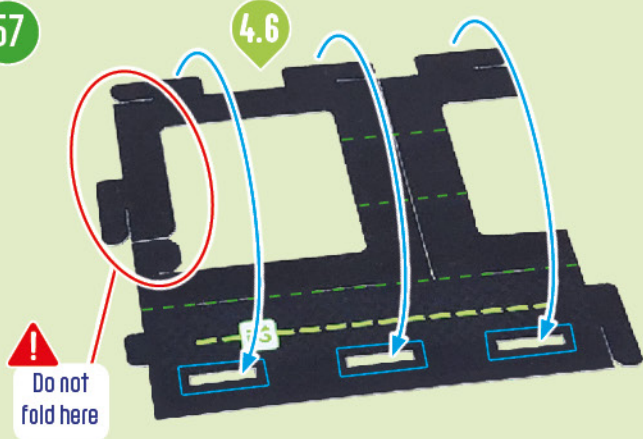


56

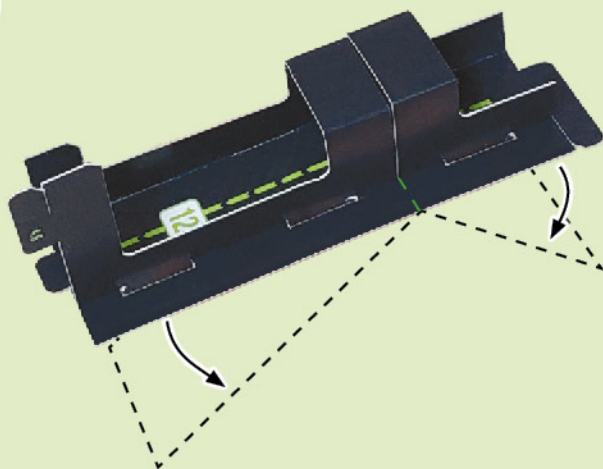


57

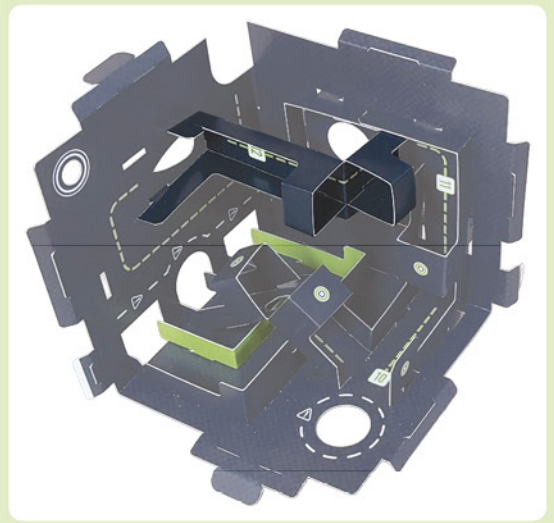
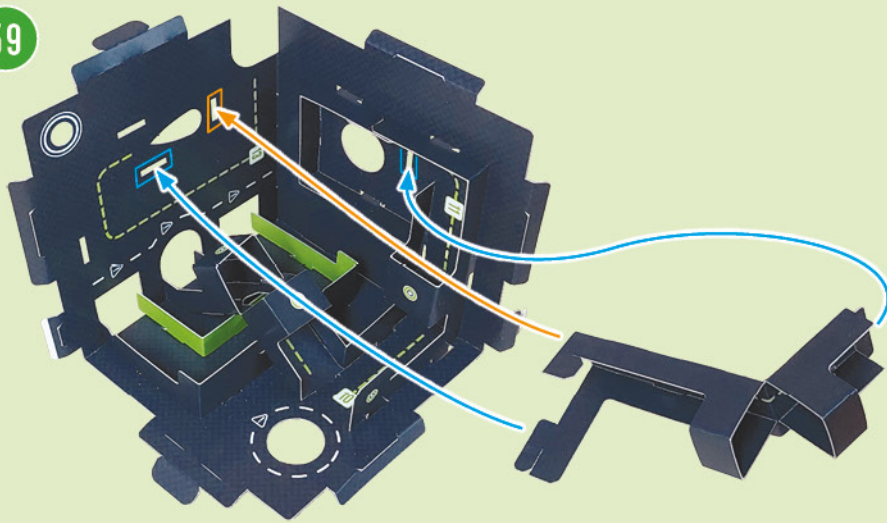
4.6



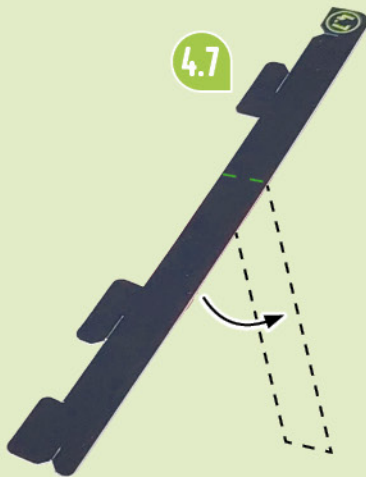
58



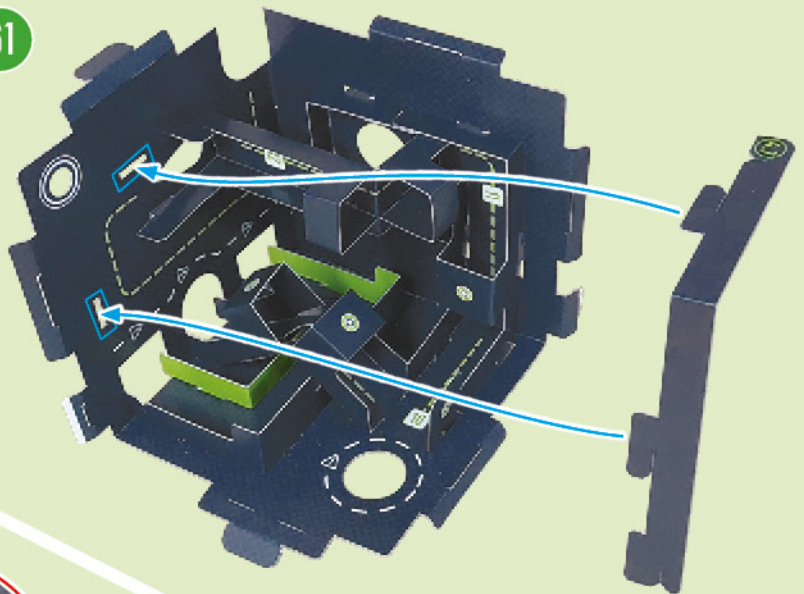
59



60

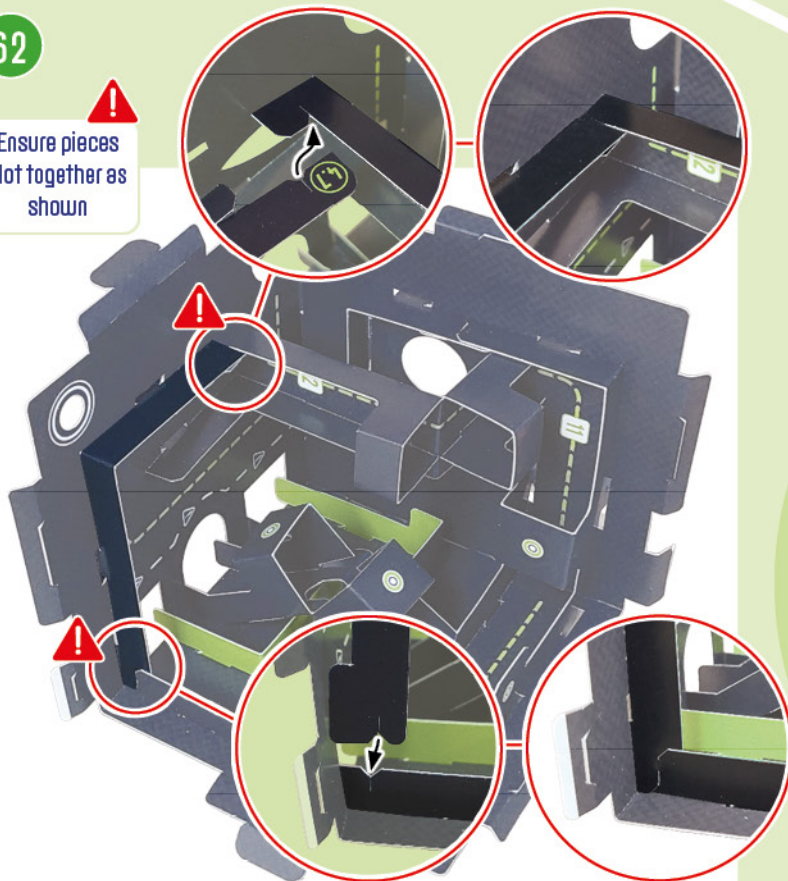


61



62

Ensure pieces slot together as shown



CUBE 4

Put to one side until Step 156

